

FULL-RANGE MOVING COIL UNIT



- 57MM full frequency dynamic coil unit significantly
- improves dynamic and transient sound field
- Dig deep into every detail of music

rich lighting	high fidelity sound quality
Self-contained	HIFI
Bluetooth 5.3	ambient light
LED	Convenient

High-quality diaphragm blast for an explosive listening experience

SOLAR BLUETOOTH SPEAKER

MUSIC'S RANDOM AND STUNNING SOUND EFFECTS



Small and portable Surging bass Bluetooth 5.3



ENJOY MUSIC ANYTIME ANYWHERE

SMALL VOLUME AND HIGH VOLUME



Small-Volume

Rgb Colorful Lights

50000 High-Power

Silky Feel

GUANGZHOU CHUANGMAO ELECTRONIC DIGITAL CO., LTD

Mob: +86 159 7536 4716

Add: The first floor of No. 22, Shaji Xinxing East Street, Liuersan Road,
Liwan District, Guangzhou City, Guangdong Province



InRaiser

THE SECOND ISSUE IN 2025 NO.02 (JUNE TO JULY)

WWW.EIRR.COM +86 0769-28055515 +86 13310800700

Branding For You

InRaiser®

3C Digital Wholesaler Magazine

RICH 3C RESOURCE PRODUCTS

CAREFULLY SELECT

HIGH QUALITY

ENTERPRISES FOR YOU

MAY. 2025
No. 02

3C@TG.LHK

RICH IN CATEGORIES

24h / +86 133 1080 0700



ISSN 2708-4744



9 772708 474001 >

Gather All Kinds Of 3c Products

TWS | POWER BANK | VR GLASSES | SMART WATCH | AUDIO | DRONE

OHAYO 雷登

FOCUS ON AUDIO

OHAYO-M8



Wireless
Bluetooth 5.1



24H
battery life



IPX7
waterproof



Multiple units
in series



Reverse
charging



Use in multiple
scenarios



It integrates 2x4" mid-bass unit and 2x20mm tweeter, plus 100W peak power and dual bass-enhancing diaphragm configuration to create a loud and powerful ohayo signature sound.



AUDIO ADVANTAGE

Large acoustic
cavityAudio Advantage

2x20mm
tweeter

2x4mm
mid-bass unit

100 W
peak power

ICONIC BUCKLE STRAP
easy to carry

ICONIC BUCKLE STRAP
stylish appearance

BATTERY LEVEL DISPLAY
Intuitively

BASS DC TF
USB AUX

ABOUT US

OHAYO GROUP

OHAYO Group Co., Ltd. is an audio equipment company integrating R&D, production and sales. The company mainly produces and sells digital audio and video products and household appliances. With the business philosophy of "excellence", we are committed to delivering pure, clear and natural sound to people, making music inspirational. What melts into the ear is not only the feeling of sound, but also the charm of sound.

● CONTACT DETAILS

Tel: 0755-89580949 Mobile: 15361846658

Email: support@ohayo.com.cn

Address: 2nd Floor, Huaya Building, Huaya Industrial Park, Longhua District, Shenzhen



LIBRATONE

"LITTLE BIRD" THAT CAN TALK AND SING

Libratone BIRD smart bluetooth speaker

Simple and quasi-physical design, with fashionable and colorful color matching, the overall shape is unique and lively

Small speakers
lots of fun



A VARIETY OF CONTROLS FULL OF FUN



Turn head left/right
ready to start



Mouth opening with voice prompt and
bottom light ring for status indication



Lightly touch the area of the head above
the mouth Wake up voice assistant



Tap the button on the tail to control
music playback

A VARIETY OF CONTROLS FULL OF FUN

The bottom of the magnetic suction design,
easy to attach to the iron metal surface,
and comes with a magnetic base that can
be pasted.



CONTACT US

Tel: 400-650-7810 E-mail: support@little-bird.com.cn

Address: A3, Building 1, No. 18, Keyuan Road, Economic Development Zone, Daxing District, Beijing



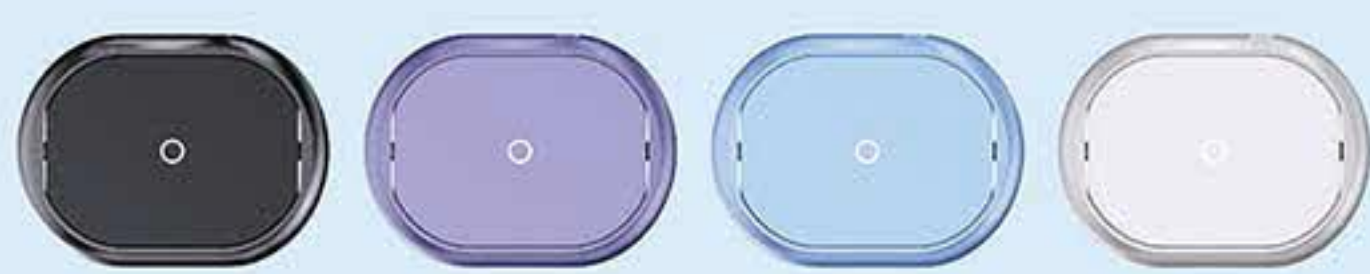
GK-E050B



GK-E059



GK-E056



GK-E037



GK-726B



GK-JT10A



GK-E043B-Pro



GK-E043A



歌酷音频之家 APP
Geku Audio Home APP



袁小姐
电话: 13724254360
邮箱: 1119613097@qq.com



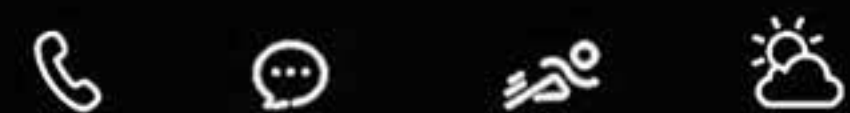
刘小姐
电话: 13725527078
邮箱: 670063521@qq.com



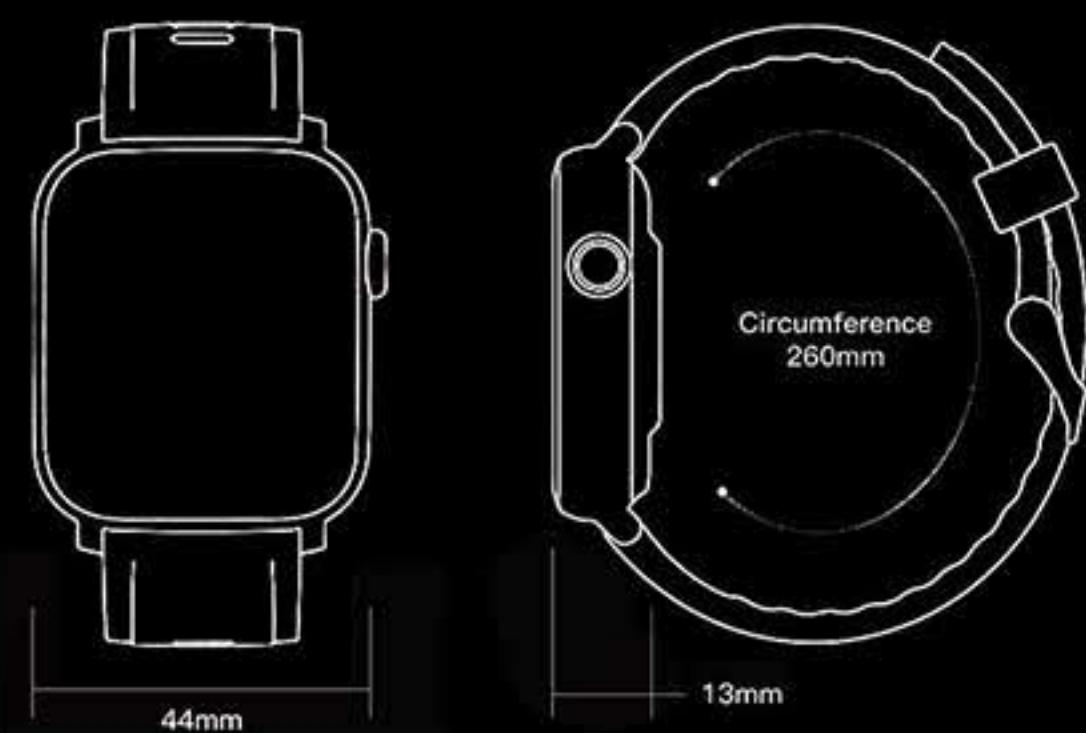
Name: Alice
电话: 13723505725
邮箱: alice@honkyo.com

Niael

SPORTS SMART WATCH



Bluetooth connection, information is not missed



NIAEL SMART WATCH TECHNOLOGY CO., LTD

E-mail: CED_CN@Niael.com

Https: //www.Niael.cn Service Hotline: 400-685-9471



**MORE STYLES
FOR YOU
TO CHOOSE**

Smart / Convenient / Beautiful



NIAEL
SCAN IT LATEST NEWS

More WooHoo products Choose
one of your own

Sales of a single design case exceeded 100 million

单款设计案例 销量破亿

产品外观设计 & 产品结构

广东省工业设计协会理事单位
新增合作产品设计客户 漫步者 万魔 魔声 JLAB



广州岩石艺术设计有限公司

ADD: 广州市海珠区昌岗街道礼岗路心中创享空间4楼404

15920502282 郑先生

WWW.GZYSSJ.COM



DONGGUAN QIHANG ELECTRONIC TECHNOLOGY CO.,LTD
 Mob: +86 139 2923 1880 (Mr.He) Landline: 0769-8128 3456
 Web: www.qihang18.com QQ: 2880196030 E-mail: hlx@qihang18.com
 Add: Room 808-811, Shenglianchuangzhan Building, No. 148 Hongye North Road, Tangxia Town, Dongguan City



COMPANY PROFILE

Dongguan Qihang Electronic Technology Co., Ltd. is engaged in the development of Bluetooth RF, audio, PCBA production line automation test system customization, to provide high-end imported (Rohde & Schwarz, Keysight, Anritsu, Tektronix, Audio Precision, etc.) instrumentation agent sales, rental, maintenance, measurement, replacement, technical support and other one-stop services to reduce customer test input costs, optimize product testing solutions, simplify product testing operations, increase product testing capacity. We provide one-stop services to reduce the cost of test inputs, optimize product testing solutions, simplify product testing operations and increase product testing capacity. Through unremitting efforts for more than ten years, we have become a one-stop service provider for Bluetooth product development, production and testing, and a well-known enterprise with the sales of internationally renowned branded instruments as the mainstay and the development and production of our own branded instruments at a high speed, creating a new brand in the Chinese instrument industry.

R&S®CMW270 WIRELESS CONNECTIVITY TESTER

Bluetooth RF tester for Low Energy (BLE), Basic Rate and Enhanced Data Rate qualified by the Bluetooth-SIG



WLAN 11 a/b/ /n/ac /ax SISO and MIMO signaling test

Dual tester concept with multiple-standard RF measurements for WLAN SISO/MIMO and Bluetooth

Server for WLAN application testing and customizable R&S®CMWrun test sequencer

General purpose ARB generator for Bluetooth, WLAN, GNSS and various broadcast technologies

R&S®ESW EMI TEST RECEIVER

Excellent RF characteristics and fast measurements

Key features

Frequency range: 1 Hz to 8, 26.5 or 44 GHz Compliant with CISPR 16-1-1, ANSI C63.2, MILSTD461 and FCC standards Excellent dynamic range and accuracy Ultra-fast measurements with FFT-based time domain scanning Supports real-time spectrum analysis with 80 MHz bandwidth (optional)



R&S®FSW SIGNAL AND SPECTRUM ANALYZER

Setting standards in innovation and usability

Unparalleled low phase noise and best sensitivity on the market

8.3 GHz internal analysis bandwidth

800 MHz real-time analysis bandwidth

SCPI recorder simplifies code generation

High dynamic range enables outstanding EVM performance



TEK 3 SERIES MDO MIXED DOMAIN OSCILLOSCOPES

Key performance indicators

2 analogue channel and 4 analogue channel models
 100 MHz, 200 MHz, 350 MHz, 500 MHz, 1 GHz bandwidth models

Bandwidth scalable (up to 1 GHz)

Up to 5 GS/s sampling rate

10 M record length on all channels

>280,000 wfms/s Maximum waveform capture rate

Passive voltage probe as standard, 3.9 pF capacitive load and

250 MHz or 500 MHz or 1 GHz analogue bandwidth

Spectrum analyser (optional)

Frequency range: 9 kHz-1 GHz (standard) or 3 GHz (optional)

Extremely wide capture bandwidth up to 3 GHz

Arbitrary function generator (optional)

13 pre-defined waveform types

50MHz waveform generation

128k arbitrary waveform generator

record length 250MS/s arbitrary

waveform generator sample rate

Digital channels (optional)

16 digital channels

10M record length on all channels

121.2 ps timing resolution



R&S®SMW200A VECTOR SIGNAL GENERATOR

The fine art of signal generation

Frequency range up to 67 GHz (dual path: up to 44 GHz)

2 GHz modulation bandwidth

Integrated fading with up to 800 MHz bandwidth and up to 8x8 MIMO

Signal generation for all major digital communications standards

Advanced GNSS and radar simulator

Get a Quote Configure your product



KEYSIGHT TECHNOLOGIES E8267D PSG VECTOR SIGNAL GENERATOR 100 KHZ TO 44 GHZ

Key features

•Metrology-grade performance and versatility combined with realistic wide-band radar, electronic warfare and satellite communications waveforms support advanced receiver testing

•Up to 4 GHz bandwidth enables simulation of complex electromagnetic environments

•Signal Studio software helps you speed up the creation of complex signals: pulse creation, noise to power ratio (NPR), multiple audio signals, wireless and more

•Excellent SSB phase noise of 143 dBc/Hz at 1 GHz (10 kHz bias) ensures that more complex signal requirements are met

Frequency range

•E8267D-513 Frequency range:250 kHz-13 GHz
 •E8267D-520 Frequency range:250 kHz-20 GHz
 •E8267D-532 Frequency range:250 kHz-31.8 GHz
 •E8267D-544 Frequency range:250 kHz-44 GHz

Baseband generator

•E8267D-003 PSG digital output connection to N5102A
 •E8267D-004 PSG digital input connection to N5102A
 •E8267D-009 Extracted Flash Memory, 8 GB
 •E8267D-602 Internal baseband generator, 64 MSa memory

Spectral purity

•E8267D-UNX
 •E8267D-UNY

•Analog modulation
 •E8267D-UNT

•Pulse modulation

•E8267D-UNU

•E8267D-UNW

Ultra-low phase noise performance

Enhanced ultra-low phase noise performance

AM, FM, phase modulation and low frequency output

Pulse modulation

Narrow pulse modulation



KEYSIGHT TECHNOLOGIES E5080B ENA VECTOR NETWORK ANALYZER

Wide frequency coverage from 9 kHz to 4.5/6.5/9/14/20 GHz or 100 kHz to 26.5/32/44/53 GHz

Fully capture device performance with a wide dynamic range of 140 dB

Achieve complete device characterization with optional built-in DC sources, bias tees, pulse generators and pulse modulators

Consistently test between R&D and production with the same UI and SCPI commands as high-end PNAs

Improve throughput by performing spectrum analysis, pulsed-RF measurements, vector mixer measurements, noise figure, and more on a single instrument



KEYSIGHT TECHNOLOGIES N9020B SIGNAL ANALYZERS

Key features

100% interception probability for signals with a minimum duration of 17.3 μ s and a full range of advanced triggering features to observe, capture and understand difficult signals

Observe signal dynamics with a comprehensive real-time display

Protect your investment - add real-time spectrum analysis (RTSA) to your instrument at a fraction of the cost of dedicated solutions

Easily integrate the 89600 software into your system, allowing you to analyse complex signals in a comprehensive manner



Application General

•89600 VSA Software
 •Analogue demodulation
 •Noise factor
 •Phase noise
 •Pulse
 •Real-time spectrum analysis
 •MATLAB

Application Cellular

•GSM/EDGE
 •NB-IoT
 •LTE/LTE-Advanced
 •W-CDMA/HSPA/HSPA+

KEYSIGHT TECHNOLOGIES N9030B PXA SIGNAL ANALYZERS

Key features

100% interception probability for signals with a minimum duration of 17.23 μ s and a full range of advanced triggering features to observe, capture and understand hard-to-capture signals

Observe signal dynamics with a comprehensive real-time display

Protect your investment - add real-time spectrum analysis (RTSA) capabilities to your instrument at a fraction of the cost of dedicated solutions

Easily integrate the 89600 software into your system, allowing you to analyse complex signals in a comprehensive manner



KEYSIGHT TECHNOLOGIES X-SERIES SIGNAL ANALYZERS

Key features

Design, test and achieve your next breakthrough with our state-of-the-art signal analysis technology

Take advantage of the most comprehensive range of application-specific software for more in-depth debugging or for the easiest single-button measurement

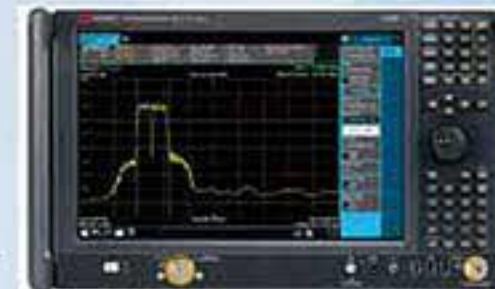
Continuously evolving as technology changes, with the ability to upgrade frequency, bandwidth, instantaneous, CPU and other features after purchase

100% code compatibility from development to manufacturing, allowing the entire enterprise to maintain consistent measurements, regardless of the instrument you choose to use



Find the answers you need faster with outstanding performance at your fingertips

Simpler measurement settings and customisable viewing modes with a new multi-touch interface View, capture and analyse the most erratic signals, known and unknown, with instant spectrum analysis Delivers >75dBc spurious-free dynamic range across the entire 510MHz bandwidth, allowing you to see signals that were previously unobservable More accurate measurement of low-level quasi-signals using Noise Floor Extension (NFE), which reduces measurement noise to 10dB



PRODUCTS	FREQUENCY OPTIONS	BANDWIDTH OPTIONS	REAL-TIME BANDWIDTH OPTION	AT 1GHZ	AT 1GHZ AT 10KHZ FREQUENCY BIAS PHASE NOISE
N9041B UXA Signal Analyzer Multi-Touch 2 Hz to 110 GHz	90, 110 GHz	25 MHz standard 40 MHz, 1 GHz	255 MHz	-174 dBm	-135 dBc/Hz
N9040B UXA Signal Analyzer 3 Hz to 50 GHz	8.4, 13.6, 26.5, 44.50 GHz Mixers to 1.1 THz	25 standard 40, 255 510 MHz, 1 GHz	255, 510 MHz	-174 dBm	-136 dBc/Hz
N9030B PXA Signal Analyzer Multi-touch, 2 Hz to 50 GHz	3.6, 8.4, 13.6, 26.5 32, 44, 50 GHz	25 MHz Standard 40, 85, 125, 160 MHz	85, 160, 255 510 MHz	-174 dBm	-136 dBc/Hz
N9020B MXA Signal Analyzer Multi-touch, 10 Hz to 50 GHz	3.6, 8.4, 13.6 26.5, 32, 44, 50 GHz	25 MHz Standard 40, 85, 125, 160 MHz	85, 125, 160 MHz	-172 dBm	-114 dBc/Hz
N9010B EXA Signal Analyzer Multi-touch, 10 Hz to 44 GHz	3.6, 7, 13.6, 26.5, 32, 44 GHz With mixers up to 1.1 THz	Standard 25, 40 Mhz	None	-172 dBm	-109 dBc/Hz
N9000B CXA Signal Analyzer Multi-touch, 9 kHz to 26.5 GHz	3, 7.5, 13.6, 26.5 GHz	10 MHz Standard 25 MHz	None	-163 dBm	-110 dBc/Hz
N9030A PXA Signal Analyzer 3 Hz to 50 GHz	3.6, 8.4, 13.6, 26.5, 43, 44 50 GHz With mixers up to 1.1 THz	25 MHz Standard 40, 85, 160 MHz	85, 160 MHz	-171 dBm	-132 dBc/Hz
N9020A MXA Signal Analyzer 10 Hz to 26.5 GHz	3.6, 8.4, 13.6, 26.5 GHz With mixers up to 1.1 THz	25 MHz Standard 40, 85, 125, 160 MHz	85, 125, 160 MHz	-172 dBm	-114 dBc/Hz
N9010A EXA Signal Analyzer 10 Hz to 44 GHz	3.6, 7, 13.6, 26.5, 32 44 GHz With mixers up to 1.1 THz	Standard 25, 40 Mhz	None	-170 dBm	-170 dBm
N9000A CXA Signal Analyzer 9 kHz to 26.5 GHz	3, 7.5, 13.6, 26.5 GHz	10 MHz Standard 25 Mhz	None	-163 dBm	-110 dBc/Hz
M9290A CXA-m PXIe Signal Analyzer 10 Hz to 26.5 GHz	3, 7.5, 13.6, 26.5 GHz	10 MHz Standard 25 Mhz	None	-163 dBm	-110 dBc/Hz
N9038A MXE EMI Receiver 3 Hz to 44 GHz	3.6, 8.4, 26.5, 44 GHz	0 standard, 25, 85 MHz	85 MHz	-167 dBm	-114 dBc/Hz

BLUETOOTH SMARTWATCH

i20

Answer/make phone calls
Heart rate monitoring
Blood pressure/oxygen monitoring
Sleep monitoring
Multiple Sport Modes
...



1.69" IPS screen
240*280 Superretinal screen
IP67 Waterproof
7 DAY Daily usage mode battery life
5.0 Bluetooth version



SHENZHEN WANGYI INTELLIGENT CO., LTD

Tel : +86 18682272090
Add : No.7 Jinkeng North Road, the Nanling Mountain Village Community, Nanwan Street, Longgang District, Shenzhen, Guangdong, China



PROVIDE ALL KINDS OF ELECTRONIC PRODUCTS
GIVE YOU MORE COMFORTABLE EXPERIENCE

提供各类电子产品,给你更多舒适体验

TMX-501

USB2.0

Easily compatible with a variety of file images



TMX-126

BLUETOOTH HEADSET
蓝牙耳机



TMX-232

AUDIO CABLE 音频线



TMX-607

PHONE CASES 手机壳



TMX-311

ADAPTER 适配器



TMX-715

POWER BANK 移动电源



TMX-812

BATTERIES 电池



TMX-127

HANGING
HEADPHONES
挂脖耳机



TMX-128

HEADSET
头戴耳机



TMX-129

WIRED HEADSET
有线耳机

Contact : Mr. Yu +86 13148551828 (WeChat with the same number) 联系方式 : 余先生 +86 13148551828 (微信同号)

SANAG M11

Small body, big volume

“ 360° omnidirectional sound
Surging bass
Small and easy to grasp ”

5W
strong power

52mm
loudspeaker

Bluetooth™

enjoy time



Colourful Appearance Options



BRITISH BRAND + IMPORTED CRAFTSMANSHIP

Founded in London, England, adhering to the aesthetics of New England craftsmanship, it aims to let the public feel the avant-garde design of Great Britain.



BIG SPEAKER + INDEPENDENT BASS DIAPHRAGM

5W high-power speaker + 52mm large bass diaphragm, high volume does not break the sound, enjoy the shocking 3D stereo sound.



LARGE CAPACITY BATTERY + LONG PLAY

1800mAh battery and low-power circuit design, about 12 hours of long-lasting battery life, can listen to more than 120 songs continuously.

SANAG aims to combine the practicality and creativity of products to provide every consumer with high-quality, trendy, fashionable and creative digital products, so that consumers can enjoy a smart and quality life.

sanag

WWW.SANAG-UK.COM

400-8838-248

Worry about your loved one's health? Maybe you need a **smartwatch**

Guard him/her with you~



- View Weather
- Heart rate monitoring
- answer the phone
- see information
- Sports mode



SMART CALL WATCH

TYPES OF SMARTWATCHES

ADULT SMARTWATCH, ELDERLY SMART WATCH, CHILDREN'S POSITIONING SMART WATCH ...

SPORTS MODE × **HEALTH MONITORING** × **ALWAYS FOLLOW** × **ALWAYS ONLINE**



WITH THE DEVELOPMENT OF MOBILE TECHNOLOGY, MANY TRADITIONAL ELECTRONIC PRODUCTS HAVE ALSO BEGUN TO ADD MOBILE FUNCTIONS, SUCH AS WATCHES THAT USED TO ONLY WATCH TIME. NOW THEY CAN ALSO BE CONNECTED TO THE INTERNET THROUGH SMART PHONES OR HOME NETWORKS TO DISPLAY CALL INFORMATION, TWITTER, NEWS FEEDS, WEATHER INFORMATION AND OTHER CONTENT.

SHENZHEN FUMNUO TECHNOLOGY CO., LTD

MOD: +86 133 0293 0545(MR.WANG)

ADD: 3001B, SEG PLAZA, NO. 1002, HUAQIANG NORTH ROAD, FUQIANG COMMUNITY, HUAQIANG NORTH STREET, FUTIAN DISTRICT, SHENZHEN

BLUETOOTH CLOCK SPEAKER

WIRELESS CHARGE / CLOCK ALARM CLOCK / BLUETOOTH SPEAKER



HI-FI SOUND
QUALITY



BLUETOOTH
CONNECTION



360° SURROUND
SOUND



WD-100

DONGGUAN CHUANGLIAN TECHNOLOGY CO., LTD

ADD: 3RD FLOOR, BUILDING 3, URBAN ZHIGU, NO. 19 JINPENG ROAD, FENGANG TOWN,
DONGGUAN CITY, GUANGDONG PROVINCE

TEL: +86 137 1517 9844 (Mr.shi)



alibaba

RGB GRADIENT ATMOSPHERE LIGHT



light yellow



Candy powder



Glow Blue



Deep Purple

THE LATEST MULTI IN ONE BLUETOOTH AUDIO SYSTEM

ENJOY LEISURE TIME

WD-500



Wireless
Bluetooth



Alarm
clock



Telephone
hands-free



wireless
charge



usb
charging



TF
card



fm
radio



Horizontal and
vertical placement



FUNCTION

HIGH QUALITY CRYSTAL CLEAR SOUND & RICH BASS

IPX6 WATER RESISTANCE

ENJOY MUSIC FREELY



MODEL F28

KEY ATTRIBUTES:

CONNECTION MODE: BLUETOOTH CONNECTION
 FREQUENCY RESPONSE RANGE: 100HZ-20KHZ
 SIGNAL TO NOISE RATIO: ≥70DB
 EFFECTIVE DISTANCE: 10M
 CASE MATERIAL: ABS
 COLOUR: DARK BLACK, LIGHT GREY BLUE, LIGHT GREY
 WATERPROOF RATING: IPX 5
 BLUETOOTH VERSION: 5.0
 WHETHER BUILT-IN BATTERY: BUILT-IN BATTERY



MODEL F21

KEY ATTRIBUTES:

APPLICATION SCENARIO: FITNESS, OUTDOOR, MOBILE PORTABLE
 CONNECTION: CARD READER
 FREQUENCY RESPONSE RANGE: 60HZ-15KHZ
 SIGNAL TO NOISE RATIO: ≥75DB
 NUMBER OF SPEAKERS: 2
 EFFECTIVE DISTANCE: 10M
 CABINET MATERIAL: ABS
 EXTERNAL DIMENSIONS: Φ75MM*180MM
 WATERPROOF RATING: IPX 6
 BLUETOOTH VERSION: 5.1
 WHETHER BUILT-IN BATTERY: BUILT-IN BATTERY



DONGGUAN LEFANG INDUSTRIAL CO.LTD

MOB: +86 137 1320 4780 (MR.YUAN)

ADD: NO.1 XIKENG ROAD, PUXIN VILLAGE, SHIPAI TOWN, DONGGUAN CITY, GUANGDONG, CHINA

LENRUE

• New Launched
 • Ingenious Creation



LENRUE



LENRUE



• IPX6 Weather Proof for Outdoors
 • Super Portable Size to Carry at Ease
 • TWS Connection for Loud Stereo Sound
 • 24H Playing Time at 50% Volume and No Light

MINIMALIST STYLE FABRIC ART

BLUETOOTH SPEAKER

MINIMALIST FABRIC BLUETOOTH SPEAKER



Powerful battery life



Dual horn reinforcement



Hands-free function

BLUE



RED



GREY



BLACK



MULTI CLOCK
COLOR SELECTION



MINIMALIST STEREO SURROUND SOUND COLORFUL RGB LIGHT BLUETOOTH 5.3

BLUETOOTH AUDIO

ADD JOY TO LIFE



RADIO STATION

ENJOY TIME WITH THE SOUND AND MOVEMENT

FM RADIO

NOT JUST LISTENING TO MUSIC

MULTIPLE COLORS

ENJOY DIFFERENT STYLES OF LIFE

SHENZHEN CHENRUIJIA PLASTIC ELECTRONIC TECHNOLOGY CO., LTD

Tel: +86 18670603853 (Mr. li)

Web: <https://chenruijia0755.1688.com>

Add: Room 401B, 4th Floor, Building E, Tong'an Pharmaceutical Industrial Park, No. 124 Yonghe Road, Tangwei Community, Fuhai Street, Bao'an District, Shenzhen City, Guangdong Province

UTrue

DOUBLE
MICENC

HIGH SOUND QUALITY



HANDS FREE
CALLING



COMFORTABLE
TO WEAR



SUPERIOR
SOUND QUALITY



STAND-BY
FOR LONG TIME

P8
ANC



P10
ANC



NOISE CANCELLING
HEADPHONES

P6
ANC



P7
ANC



P4
ANC

BRIGHT DESIGN STABLE AND
COMFORTABLE WEARING



SHENZHEN UTRUE TECHNOLOGY CO., LTD.

Mob: +86 18025540508 (Mr.Lu) QQ: 2123244517

E-mail: utrue@sz-utrue.com Web: www.sz-utrue.com

Add: 201, Building A, 1970 Cultural and Creative Park Minzhi Street, Longhua District, Shenzhen



WeChat

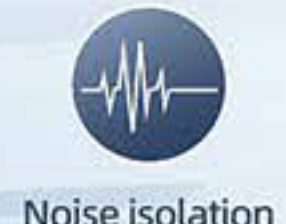


高保真

HIGH FIDELITY

LISTEN TO GOOD MUSIC MOMENTS
Out of the sound quality immersive

GBZ-23



SOPHISTICATED LOOK
ERGONOMIC DESIGN



GBZ-21

GBZ-22

GBZ-24

RECLINING INTO THE EAR FOR A COMFORTABLE FIT

SUPPORT IPHONE15



DONGGUAN GAOBAOZHEN ELECTRONICS CO., LTD.

E-mail: august_liu8031@126.com

Mob: +86 13416702820(Mr.Liu) / +86 18617256429(Mr. Han)

Add: 4th Floor, No. 25, Hongqi Road, Hengli Town, Dongguan City



Wechat



Wechat



赢通通讯股份有限公司

Ying Tong

Yingtong Telecommunication Co., Ltd.

Company Profile

Yingtong Communication Co., Ltd. was established in December 1999 and successfully listed on the main board of the Shenzhen Stock Exchange on April 13th, 2017 (stock code: 002861). Currently, it has ten subsidiaries: Dongguan KaiLai Electronics Co., Ltd., Hubei Yingtong Electronics Co., Ltd., Hubei Yingtong Precision Electronics Co., Ltd., Hubei Yingtong Health Technology Co., Ltd., Wuhan Yingtong Intelligent Technology Co., Ltd., Dongguan Yingtou Trading Co., Ltd., Guangxi Yingtong Intelligent Electronics Co., Ltd., Yingtong (Hong Kong) Technology Co., Ltd., Yingtong (Vietnam) Electronic Technology Co., Ltd., and Yingtong (India) Electronic Technology Co., Ltd. It also has six production bases, four R&D centers, two CNAS laboratories, and one Yingtong Management Training Center.

For over two decades, the company has been dedicated to the research and development, production, and sales of various smart headphones, smart speakers, wireless chargers, data cables, communication cables, and smart medical devices. Its products are mainly applied in mobile communication terminal products, personal computers, audio and video playback devices, and other smart terminal products, making it a core supplier for well-known international consumer electronics brands.

Yingtong Communication is an advantageous enterprise integrating technology research and development, structural design, precise testing, assembly and delivery, and technical services. It leads the industry in terms of scale supply, technology research and development, product quality, and market share. The company is committed to the development and research of new materials, new technologies, and new equipment, and has independently developed 530 patents, including 80 invention patents. It has received numerous honors such as National High-tech Enterprise, National Intellectual Property Advantage Enterprise, Intelligent Audio Engineering Technology Research Center, Top Ten Innovative Enterprises in Hubei Province, Hubei Province Enterprise Technology Center, Second Prize of Hubei Province Science and Technology Progress, Hubei Province Doctoral Post Base, Hubei Province Academician and Expert Workstation, China's Top 100 Electronic Components Enterprises, and AAA Credit Rating Enterprise.

Yingtong people adhere to the quality policy of "committing to customer satisfaction and striving for perfection" and the service philosophy of "faster, better, and more excellent". They gather like-minded individuals to build a combat-effective elite team. Through vertical integration of the industrial chain and continuous improvement of high-precision automated manufacturing levels, they aim to become a world-leading provider of overall solutions for "big transmission, big acoustics, and big health" products!

The company will always rely on professional talents, technological innovation, and corporate culture to lead its development, and repay investors with outstanding business performance. It will also repay society with a stronger sense of responsibility and mission!

Scale of Company

6 MAJOR PRODUCTION BASES



DONGGUAN



HUBEI



WUHAN



DONGGUAN



XIANNING



GUANGXI



VIETNAM



INDIA



WUHAN



CALIFORNIA

2 LABORATORIES



DONGGUAN CNAS LABORATORY



HUBEI CNAS LABORATORY

1 MANAGEMENT TRAINING CENTER



MANAGEMENT TRAINING CENTER

E-mail : sale04@yingtong-wire.com

http://www.yingtong-wire.com

Mob: +86 18825897315

Tel: +86 0769-89928999

Add: No. 333, Jingjiu Road, Changping Town, Dongguan City

Large transmission



Semi-finished silicone neckband Bluetooth headphones



5-to-1 USB-C transparent industrial style hub



Wireless charging over air



HDMI A To HDMI 2.0 Cable



6C battery cable



TYPE C to TYPE C 4.0 Cable



Neckband Hearing-aids Earphone



Ear-hook Hearing-aids earphone



Smartwatch

Greater Health



Bone conduction sleep speaker



Atomizer



Tower Fan

Audio products



Bone conduction headphones



OWS headphones



TWS headphones



Office Bluetooth Headset



Desktop Hi-Fi speaker



Vertical fan

SONIA[®] HANIZU[®]



Intelligent
noise reduction



Original sound
presentation



Stable Bluetooth
connection

HZ-BT713



HZ-BT900



HZ-BT712



Mob: +86 134 3331 3636(Mr.Zhang)
Add: Fengxing Electronics Factory, Qianjin Road, Gurao Town, Chaoyang District, Shantou City

E-mail: 836692888@qq.com

LISTEN TO THE SOUND OF THE WORLD

HZ-BT812



HZ-BT911



HZ-BT711



HZ-BT990



HZ-BT811



HZ-BT618



HZ-BT623



HZ-BT638



SHANTOU CHAOYANG DISTRICT FENGXING ELECTRONICS FACTORY



Alibaba



WeChat

HIFI sound quality

LISTENING TO THE SOUNDS OF NATURE



Tasteful and Clean
Wear Stylishly
Professional Sound Quality



Dongguan Yueyin Electronic Technology Co., Ltd. was established in 2010, is a collection of development, production, sales in one of the mobile phone headset enterprises, the company covers an area of more than 1,000 square meters, 3 factories in the mainland, more than 200 employees, the company has a complete management system, can be customized according to customer needs, specializing in the production of Mp3 headphones, mobile phone headphones, sports Bluetooth headphones, halterneck Bluetooth headphones, headphone cable semi-finished products, etc.



Excellent analysis and clear hierarchy
Present richer music details



YY-005

LIGHTNING/TYPE-C/3.5 PLUG
HEADPHONES

YY-031

LIGHTNING/TYPE-C/3.5 PLUG
HEADPHONES

YY-010

LIGHTNING/TYPE-C/3.5 PLUG
HEADPHONES



YY-032

YY-033

YY-034

YY-035



YY-036

YY-037

YY-038

DONGGUAN YUEYIN ELECTRONIC TECHNOLOGY CO., LTD.

MANAGING DIRECTOR: MR. WAN +86 18676932250

BUSINESS MANAGER: MR. ZHANG +86 18781807992

BUSINESS: MR. WAN +86 13751443954 E-MAIL: 675119730@qq.com

ADDRESS: DONGGUAN CITY, SHITAN PUJIANGYUAN ROAD NO. 21



WECHAT QR CODE



Cigarette Lighter



D1 Power-on Cigarette Lighter

Just insert it and it can be used
Use Type-C port, be compatible with phones, iPads, power banks and PCs
Compact and portable



D2 Air Blow Cigarette Lighter

Blow gently, the flame is ignited
Use Type-C port, be compatible with phones, iPads, power banks and PCs
Compact and portable



CT6 Digital Audio Adapter

CX31993 DAC Chip
PCM 32bits/384KHz
8 strands silver plated wire



CT6L Digital Audio Adapter

CX31993 DAC Chip
PCM 32bits/384KHz
8 strands silver plated wire



CT6PRO/PROL Digital Audio Adapter

CX31993 DAC Chip
MAX97220 AMP Chip
PCM 32bits/384KHz
8 strands silver plated wire

HiFi Amplifier Adapter

USB Cable



C2C Fast Charging Cable

PD60W(20V 3A)
Charging + data transfer
Nylon woven, strong and durable



C2L Lightning fast charging Cable

PD18W (9V 2A)
Charging + data transfer
Nylon woven, strong and durable



A2C fast charging Cable

PD22.5W (4.5V 5A)
Charging + data transfer
Nylon woven, strong and durable

Strength factory | stable delivery

Sufficient stock, no worries after sale

Undertake OEM/ODM orders



Contact Us
联系我们

Miss Huang

13538400360 (Wechat)

xiaojie_audio@163.com

Room 403, Building 3, 78 Xihu Wenquan South Road
Shilong Town, Dongguan City, Guangdong Province

HiFi Audio Products



PJ2+ 3.5mm upgrade cable

5N OFC silver plated conductor
Single button, QDC interface



PJ3 TypeC upgrade cable

Chip:KT0211L(24bits 96KHz)
5N OFC silver plated conductor
Three button silicon mic, QDC interface



PJ4 TypeC upgrade cable

Chip:BES3001SP(32bits 384KHz)
5N OFC silver plated conductor
Three button silicon mic, QDC interface



PJ5 Lightning upgrade cable

Chip:C100(24bits 48KHz)
5N OFC silver plated conductor
Three button silicon mic, QDC interface



JC20S 3.5mm upgrade cable

Twisted 8 strands silver plated wire,308 core
Single button, QDC interface



PJ2 Black gold earphone cable

Oxygen-free copper, single button
QDC, 0.78 square interface,
0.78 convex interface



AST HiFi earphone

Double magnetic double cavity moving coil unit
Transparent color
transparent black, blue



ASN HiFi earphone

Double magnetic double cavity moving coil unit
Black, white, blue

Digital Audio Adapter



CT1 TypeC Audio adapter

Chip: AB136D
Decoding rate: 16bits 48KHz
Material: Plastic



CT2PRO TypeC Audio adapter

Chip: KT02H20
Decoding rate: 32bits 384KHz
Material: metal



CT3PRO TypeC Audio adapter

Chip: SPV4040
Decoding rate: 32bits 384KHz
Material: metal



CT4PRO TypeC Audio adapter

Chip: CX31993
Decoding rate: 32bits 384KHz
Material: metal

CT4PROL Lightning Audio adapter

Chip: CX31993
Decoding rate: 32bits 384KHz
Material: metal



CT5PRO TypeC Audio adapter

Chip: ALC5686
Decoding rate: 32bits 384KHz
Material: metal



CLM TypeC Male to Lightning Female

Support music, call, line control
Material: Metal



AUX08L Apple Audio cable

C101 chip, MFi certified
Length: 1.2 m
Material: Metal



XL1 Lightning audio adapter

C101 chip
Fully functional for all Apple models
Material: Metal

XL1 Lightning audio adapter (Simplicity)

C100 chip Material: plastic
Fully functional for all Apple models



ZT1 TypeC Audio adapter

Chip: AB136D
Decoding rate: 16bits 48KHz
Material: Plastic



ZT2 TypeC audio adapter

Chip: KT0200
Decoding rate: 24bits 96KHz
Material: Plastic



ZT4PRO TypeC audio adapter

Chip: CX31993
Decoding rate: 32bits 384KHz
Material: Metal



ZT5PRO TypeC audio adapter

Chip: ALC5686
Decoding rate: 32bits 384KHz
Material: Metal

ac2

XIAOYUN ELECTRONIC TECHNOLOGY

GAME E-SPORTS HEADSET

4 CAVITY VOICE 4 NUCLEAR POWER 4 SPEAKERS ORIGINAL
SOUND PRESENTATION MUSIC FEAST



Comfortable affixed ears



Omnidirectional stereo sound



Soft, light and painless



ANC noise reduction function

S4

S8

S5



M01 | SILICONE SLEEP HEADPHONES

M02 | SILICONE SLEEP HEADPHONES

M03 | SILICONE SLEEP HEADPHONES

东莞市小芸电子科技有限公司

DONGGUAN XIAOYUN ELECTRONIC TECHNOLOGY CO., LTD.

Mob: +86 13825773618(Mr.Ma)(WeChat same number) / +86 18520974141(Mr.Ma)(WeChat same number)

Tel: +86 0769-83067336 QQ: 1845753501 / 3256392843 E-mail: mkb456@foxmail.com

Web: <https://shop1462427472654.1688.com> Add: Mingzhu Industrial Zone, Shijie Town,

Dongguan City, Guangdong Province



WeChat



WeChat

EXPERIENCE HIFI SOUND QUALITY



S2

H5 | SMART HEADSET
COLOUR ○ ●

S3



Y7



S1

PL01 | COLOUR
● ● ● ●

A2-T | COLOUR ○ ●



T4 | Ear mounted wired sports headset



T10 | COLOUR ● ●



Z810 | COLOUR ● ●



TC06 | COLOUR ● ●



Z802 | COLOUR ● ● ● ●



Z806 | COLOUR ● ●



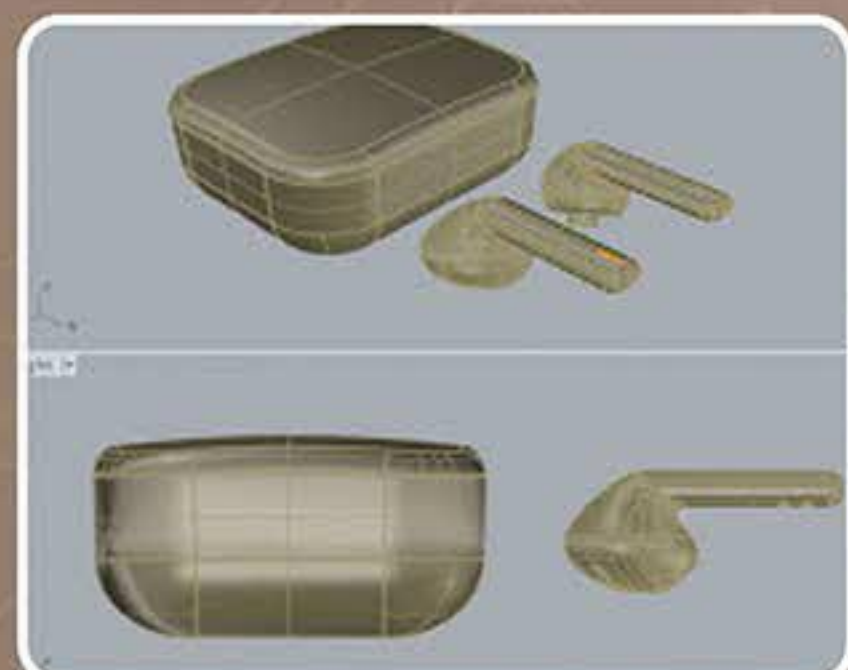
AC5.0 | COLOUR ● ●

DONGGUAN LU XUN ELECTRONICS TECHNOLOGY CO., LTD

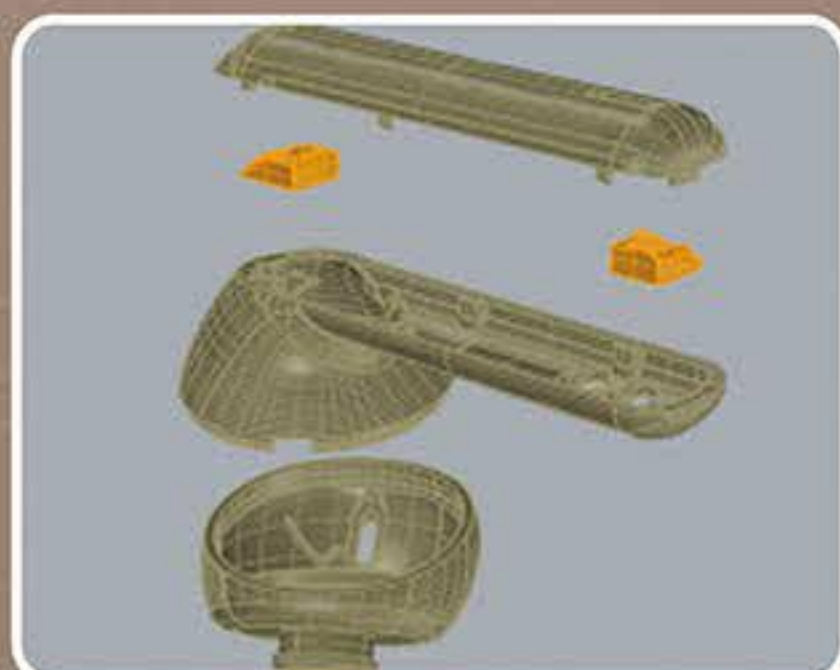


COMPANY PROFILE

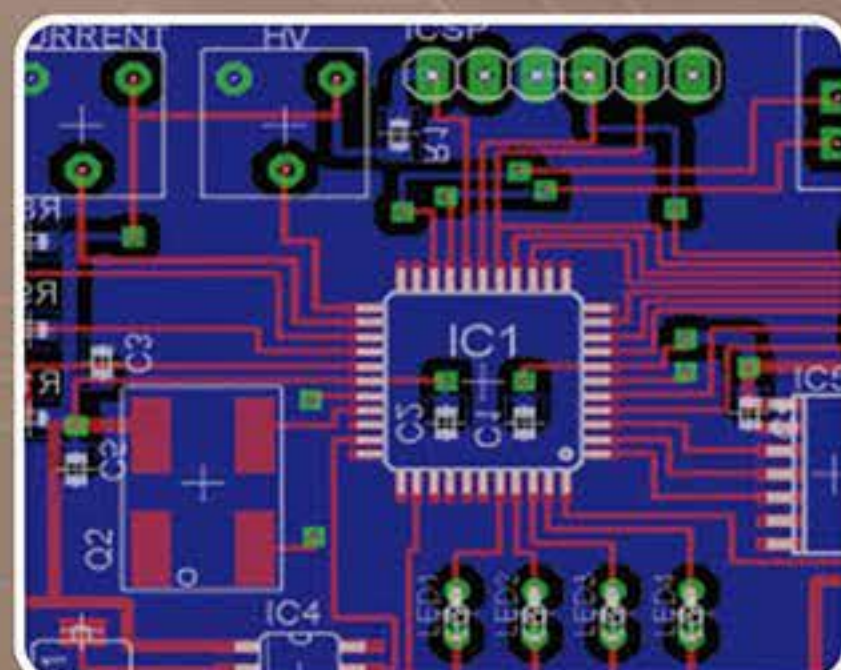
- Dongguan Lu Xun Electronics Technology Co.,Ltd. was established in 2016. Lu Xun integrates R&D, manufacturing, sales and services, and is one of the largest earphone manufacturer in China.
- Lu Xun Electronics specializes in development of fashionable, innovational and reliable earphone for customers. Lu Xun brings together a group of experienced designers and technicians. We own a number of product patents. At present, our main product line include TWS ANC, Bluetooth ANC, bluetooth headphones, gaming headsets, etc.
- Lu Xun has always been adhering to the concept of "customer-oriented, innovation-centred, quality-based". With quality products and prompt services we obtained high praises from domestic and foreign customers.



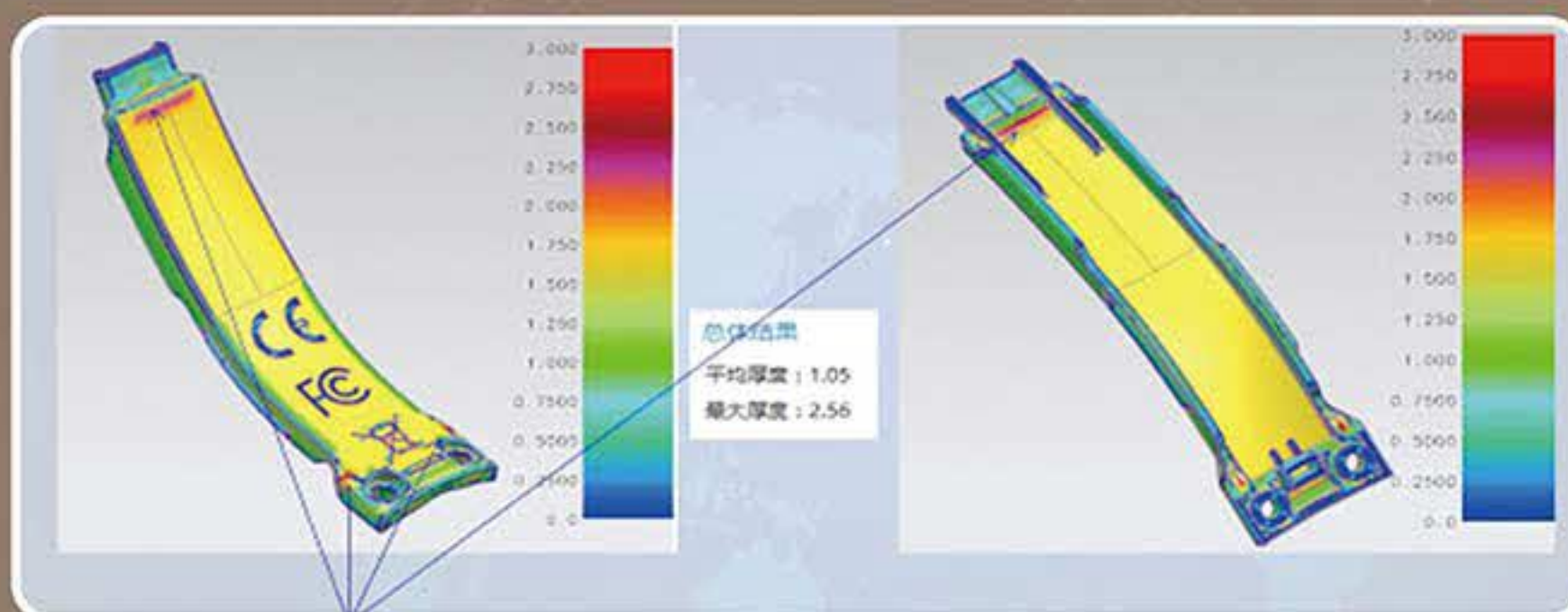
ID DESIGN



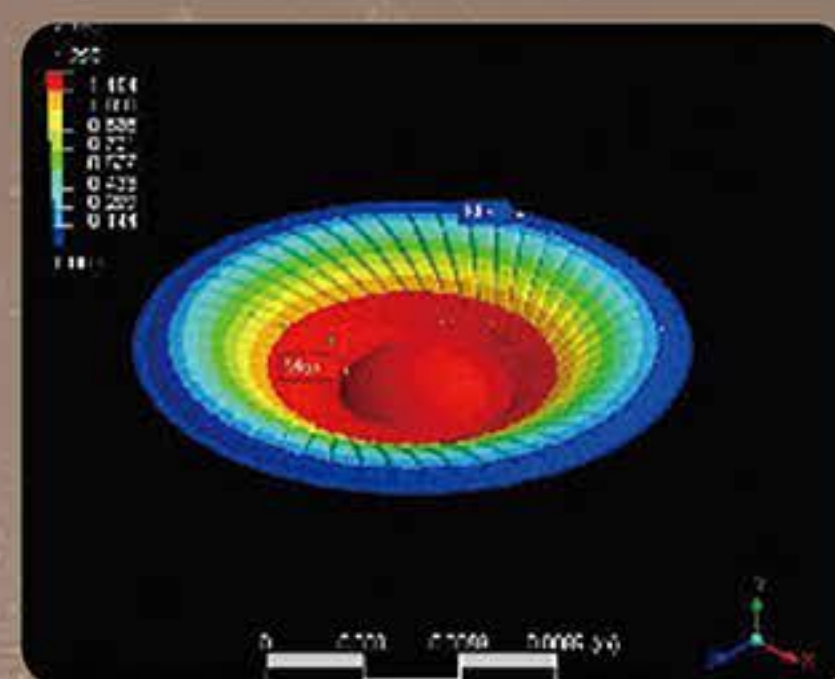
STRUCTURAL DESIGN



ELECTRONIC DESIGN



MOLD FLOW ANALYSIS



ACOUSTIC DESIGN AND SIMULATION ANALYSIS

NC06 Hybrid ANC+Dual MIC ENC TWS



1. With hybrid ANC (Active Noise Cancelling) technology to provide excellent noise cancellation and transparency experience.
2. Powerful and crisp sound experience.
3. Dual MEMS ENC (Environmental Noise Cancellation) for clear conversation
4. Intelligent case with button for bluetooth reset and connection without open case
5. With hall switch for auto on and easy to connect
6. FPC antenna
7. USB Type-C charging port

Bluetooth Chipset: Airoha AB1562A

ANC type: Hybrid (Feedforward & Feedback)

ANC peak: -35dB

Driver size: $\phi 10$ mm

Battery in earbud: 45 mAh.

Play time: ANC OFF 6 hrs, ANC ON 5 hrs

Battery in case: 480 mAh. Provides 3 full charging circles for earbuds up to 24 hours play time



EN08 Dual MIC ENC TWS

1. Dual MEMS ENC (Environmental Noise Cancellation) for clear conversation
2. With hall switch for auto on and easy to connect
3. FPC antenna
4. USB Type-C charging port

Chipset: JL6973D8

Driver size: $\phi 10$ mm

Battery in earbud: 35 mAh.

Play time: 7 hrs

Battery in case: 300 mAh. Provides 3 full charging circles for earbuds, up to 21 hours play time



Contact: Mr. Wang Tel: +86-0769-81372977

Address: Dongguan City Shipai Town Temple Side Wang Yongxing Road No. 8

Mob: +86 15818380078

Email: bob@lusaudio.com

site: www.lusaudio.com



Teson 特晟

Company profile

Dongguan Tesheng Electronic Technology Co., Ltd. was established in 2009 and is located in Shijie Town, Dongguan City, Guangdong Province. It is a factory specialized in the research and development, production and sales of various types of earphones, telescopic cables, audio cables and other electronic products.

We have advanced testing equipment and complete production machinery, a complete management system, senior R&D engineers and a professional production team. product variety is complete, the quality is good, the price is reasonable, widely used in automobiles, mobile phones, MP3, computers and other electronic products. Adhering to the business philosophy of "quality first, integrity first", we wholeheartedly provide customers with high-quality products and efficient services, and are willing to cooperate in various ways such as OEM/ODM.

We sincerely welcome business friends from all walks of life to visit, guide and negotiate business, and look forward to establishing friendly and cooperative business contacts with you and achieving a win-win goal!



专利产品

Patented product

LS-S2-136



Convenient to carry & easy to travel



Hang the backpack



hang the keys



charge the computer



charge the rope



hang the mobile phone

LS-S2-137



650



V11



LS-LY-375



LS-LY-387



LS-LY-335



LS-LY-328



LS-LY-360



LS-LY-313



LS-EM-1003



LS-EM-659



LS-EM-971



LS-EM-1018



LS-EI-210



LS-EM-972



Dongguan Tesheng Electronic Technology Co., Ltd

Mob: +86 132 6686 3686 Jarson +86 138 2913 0970 Aaron

E-mail: lst2015@vip.163.com

Add: NO.272 Tongde Road, Liuwu Industrial District, Shijie Town, Dongguan City, Guangdong Province, China-523303



Official website



Alibaba

- EXPLORE BLACK TECHNOLOGY •
- EXCELLENT QUALITY •

BONE CONDUCTION BLUETOOTH HEADSET

Bluetooth version: Bluetooth 5.3
Night running light: support
Main chip: AC7006F
Waterproof grade: IP68
Battery capacity: 180mAh
Local storage: 32G
Appearance color: black, gray black, red black



NIGHT RUNNING LIGHTS

P8



Bone conduction



Imported chips



Movement dedicated



Long battery life



P11

FAST CHARGING, SUPPORTS ENC CALLS

(Charge for 5 minutes, use for 2 hours)
Patent number: ZL 2022 3 0549678.0

■ Type: P11 Fast charging bone conduction Bluetooth headset
Bare metal weight: 23g
Appearance size: 130x95x48mm (reference)
Main chip: AC7006F

■ Bluetooth frequency band: 2.4GHZ-2.48GHZ
Waterproof grade: IPX5
Fast charging: supports 3C charging
ENC call: support
Local storage: support

■ Bluetooth distance: more than 10 meters
Battery capacity: 160mAh
Standby time: 160 hours
Charging time: 0.5h
Play time: 8H (80% volume)
Appearance color: Black gray, gray white

GW1 WIRELESS BONE CONDUCTION BLUETOOTH HEADSET



Bluetooth version: Bluetooth 5.3
Word cycle bin Charging cycles: 4
Main chip: AD6973A



Appearance color: black and red (customized by customer service)
Waterproof grade: IPX4



Single earphone Play time: about 3.5h
Bluetooth frequency band: 2.4GH Z-2.48GHZ Battery capacity: 700mAh



OW5

WIRELESS BLUETOOTH EARPHONES

Bluetooth version: Bluetooth 5.4
Type: Wireless Bluetooth earphones
Model: OW5
Dual earphone bare weight: 7.5g (approx.)
Bare metal weight of charging compartment: 58g (approx.)
Bare metal weight of the whole machine: 73g (approx.)
Headphone size (length, width, height): 55*43.5*13mm
Charging compartment size (length, width, height): 82.5*66.5*25.5mm

Main chip: AD7006F8
Bluetooth frequency band: 2.4GHZ-2.48GHZ
Waterproof grade: IPX5
Bluetooth distance: ≥10 meters
Headphone battery capacity: 40mAh
Charging compartment battery capacity: 620mAh
Charging current: 5V/500mA
The number of charging cycles in a single charging box: 6

Charging box standby time: 500 hours
Charging time: 1.5h
Single earphone playback time: about 4h
Appearance color: black, White
Core selling points:
Lightweight, silicone fit, ENC calling



WELCOME TO CONTACT AND CONSULT

Contact: Mr Ni Mob: +86 13510634753 (WeChat same number) E-mail: Nick@gdbone.com QQ: 1565874023

SHENZHEN GUDE ELECTRONIC TECHNOLOGY CO., LTD.

Web: <https://shop248sv3839v997.1688.com>

Add: 401, Building B1, Gaojian Industrial Park, Fuhai Street, Bao'an District, Shenzhen



WeChat

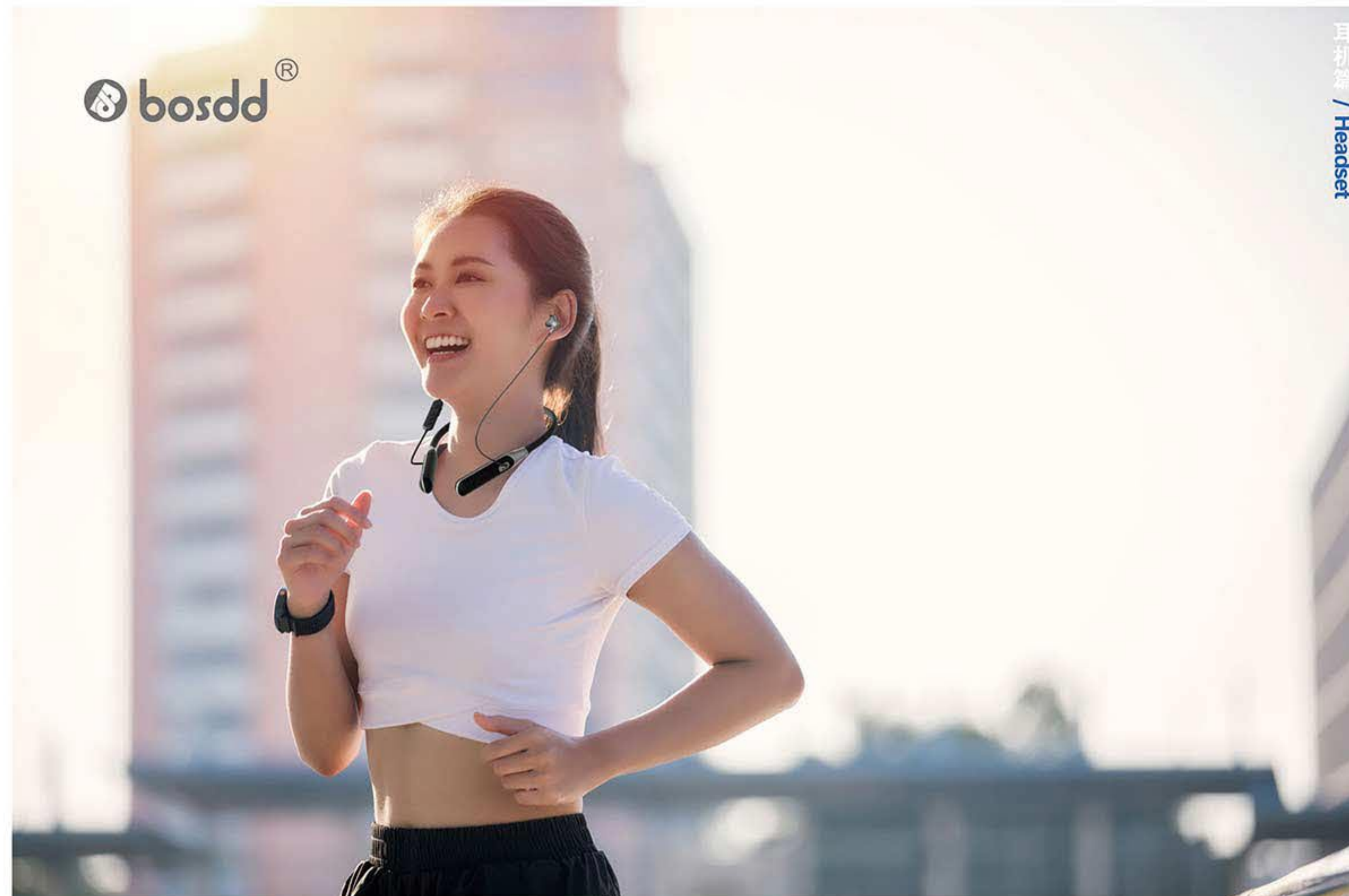
bosdd®



Dongguan Gen.M Intelligent Technology Co., Ltd
Add: No. 177, Dongyuan Avenue, Shipai Town, Dongguan City, Guangdong Province, China
Phone: +86 18680061399 (Mr Lu) Email: 100186308@qq.com
Phone: +86 13622678120 (Ms Li) Email: 3441222677@qq.com



bosdd®



Dongguan Gen.M Intelligent Technology Co., Ltd
Add: No. 177, Dongyuan Avenue, Shipai Town, Dongguan City, Guangdong Province, China
Phone: +86 18680061399 (Mr Lu) Email: 100186308@qq.com
Phone: +86 13622678120 (Ms Li) Email: 3441222677@qq.com



QYS 江西趣悦声

LISTEN TO THE EAR SPORTS NECKBAND

TRUE STEREOSCOPIC
BATTERY | **500 mAh**
THREE-DIMENSIONAL SURROUND
EXPLORE THE PATH OF MOVEMENT



EXTREME EXPERIENCE UNLIMITED LISTENING

180 degree rotation,
left ear and right ear



MORE PRIVATE MODELS

CREATE A SERIES OF AUDIO FOR THE BRAND EXPLORE THE PATH OF MOVEMENT



JIANGXI QUYUESHENG ELECTRONICS CO., LTD

Office Add: Building 12, No. 68, Hongshi Road, Yantian, Fenggang Town, Dongguan City, Guangdong Province
Production Add: Quyuesheng Electronics, Gubu Town, Yugan County, Shangrao City, Jiangxi Province

Mr.Zou

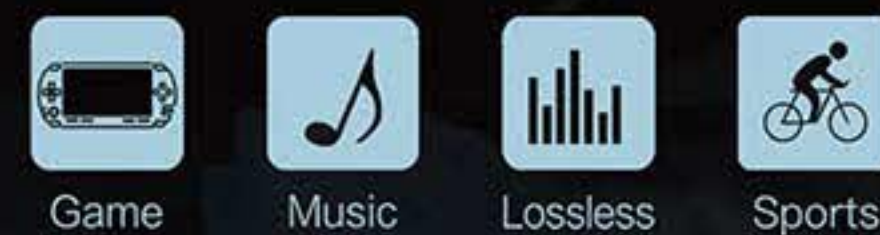


+86 18170000770

Miss.Liu



Internal Order
Business



PERFECT COMPATIBILITY

MOBILE PHONES, TABLETS,
COMPUTERS, TVS CAN BE USED WITH BLUETOOTH

S3



ANTI-SWEAT NEW UPGRADE EXERCISE
WITHOUT FEAR OF SWEAT

- ① Multi-process strict design
- ② Effectively prevent the erosion of rain sweat
- ③ Using easy to clean materials
- ④ Gentle rub that clean as before

BLUETOOTH EARPHONES

ENJOY EXCITING MOMENTS ANYTIME



WG005



T021



HUIZHOU EIGHT CUBIC TECHNOLOGY CO., LTD.

Mob: +86 136 5278 2446(Miss.Chen) E-mail: 2896844609@qq.com

Add: 5th Floor, Building B, Baolitong Building, East Industrial Avenue
Shiwan Town, Huizhou City



东莞市狼歌电子有限公司

Dongguan Langge Electronics Co., Ltd.

Dongguan Langge Electronics Co., Ltd. is an enterprise integrating professional design, technology research and development, manufacturing and sales. The main audio products: game headsets, mobile phone headsets, Bluetooth headsets, noise reduction Bluetooth headsets, Bluetooth TWS and other products.

The company's products are ergonomically designed to bring a more comfortable experience. From the selection of materials to the design of the shape, we carefully craft the details and pursue the ultimate; while demanding the quality of the products, we pay attention to the combination of fashionable appearance and perfect quality. People-oriented, simple and fashionable design, natural and fresh colors, and strive to provide you with more comprehensive and high-quality products to every customer.



Company Plant



Staff Office



Production Line



Product Showcase



Product Showcase



Product Showcase

产品展示 Product display

YX15 RGB电竞手游耳机
RGB gaming headsetYX20 电竞游戏耳机
E-sports gaming headsetsT9 手游电竞耳机
Mobile gaming gaming headphonesDR-58 头戴式降噪蓝牙耳机
Noise-cancelling Bluetooth headsetDR-82 头戴式降噪蓝牙耳机
Noise-cancelling Bluetooth headsetDR-83 2.4G头戴式蓝牙耳机
2.4G Wear Bluetooth headphones

话务员, 客服, 呼叫中心专用头戴式蓝牙耳机
Bluetooth headsets for phone operators, customer service, call centers

SGOITY

2.4G/蓝牙5.2
2.4G/Bluetooth5.2

技术规格参数/Technical Specifications

喇叭直径/horn diameter	30mm
麦克风灵敏度/mic sensitivity	-48±5dB
输入阻抗/input impedance	32Ω
频率范围/frequency range	100-16kHz
蓝牙版本/bluetooth version	V5.2
指向性/directivity	单指向/unidirectional
电池容量/battery capacity	400mah
使用时间/service time	20h
充电时间/charging time	1-2h
蓝牙距离/service distance	≤20m
工作电压/operating voltage	1.5v
充电接口/charging interface	Type-c



LG100

T200 单边话务耳机
Unilateral traffic earphonesS210 双边话务耳机
Bilateral traffic headsetT205 单边话务耳机
Unilateral traffic earphones

Dongguan Langge Electronics Co., Ltd.

Address: Second floor, Lansenchang, Shiheng Avenue, Shipai Town, Dongguan City, Guangdong Province

Mob: +86 13682352180 WeChat: 13682352180

Tel: +86 0769-81702736

QQ: 171566835

E-mail: fob725@163.com

Jd.com website: <https://mall.jd.com/index-16265397.html>



Scan To Learn More



东莞市伟尔硅橡胶制品有限公司

Dongguan WeiEr Silicone Rubber Products Co., Ltd

公司简介 COMPANY PROFILE



Weir Silicone Rubber Products began in 2016, the predecessor of the company, is by family members from a set of equipment to start business and production. After continuous efforts to develop, Dongguan WeiR Silicone Rubber Products Co. was officially registered in 2019.

In order to cope with the demand of customers' growing business, the company also continuously increase the investment in production equipment, and now the equipment has increased from the initial set of equipment, to five sets of equipment. The company has also established itself as a professional silicone rubber products company specializing in the development, production and sales of silicone products.

The company's main product categories are: all kinds of silicone ear cold/neck/headphones united line such as headphones around the silicone accessories, cell phone protective cover, silicone kitchenware, computer peripheral silicone accessories, silicone handicrafts, silicone watchband and silicone swimming accessories, and so on.

All of our products have the advantage of environmental protection and non-toxicity, and all of our products meet the requirements of environmental protection and other tests.

我们的企业文化 OUR CORPORATE CULTURE

• ENTERPRISE SPIRIT

SHARING, INTEGRITY, INNOVATION, PROGRESS

• BUSINESS PHILOSOPHY

QUALITY FIRST, CUSTOMER SATISFACTION, TO CREATE A WIN-WIN DEVELOPMENT PLATFORM FOR YOU AND HIM!

• MANAGEMENT PHILOSOPHY

RESULTS-ORIENTED, INSTITUTIONALIZED, STANDARDIZED

• SERVICE CONCEPT

MAXIMIZING VALUE FOR CUSTOMERS

• HUMAN RESOURCE PHILOSOPHY

BALANCE OF RESPONSIBILITIES AND AUTHORITY, PEOPLE-ORIENTED

• CORE VALUES

质量第一 QUALITY FIRST

忠诚友善 LOYALTY AND FRIENDLINESS

诚信经营 HONEST MANAGEMENT

爱岗敬业 LOVE AND DEDICATION TO WORK

遵纪守法 COMPLY WITH THE LAW

客户满意 CUSTOMER SATISFACTION

共同进取 JOINTLY ENTERPRISING

多方共赢 WIN-WIN SITUATION

开拓创新 PIONEERING AND INNOVATIVE

廉洁奉公 PERFORM DUTIES HONESTLY



专业硅橡胶产品制造商

Professional Silicone Rubber Products Manufacturer

专业专注, 全心服务
追求卓越, 尽善尽美

产品展示 PRODUCT DISPLAY



DONGGUAN WEIER SILICONE RUBBER PRODUCTS CO., LTD

Contact: Mr. Liang Mobile: +86 137 5143 5375 (Wechat same number)

Contact: Ms. Liang Mobile: +86 134 3454 6032 (Wechat same number)

Tel: 0769-86869579 Fax: 0769-86869509 E-mail: 1538927235@qq.com

Address: No.12, Fujiang 2nd Road, Hengjiang Village, Chashan Town, Dongguan City, Guangdong Province, China. QQ: 1538927235



Wechat

Wechat

音你而来

YIN NI ER LAI

美好声音传递者



TWS-12

TWS-13
COLOUR: ●●●

- Hifi-level sound quality
- Bluetooth 5.3 chip
- Seamless game delay
- call clear & free of noise



T11

COLOUR ●●



S510

COLOUR ○●●



BT-11

D700

S-06

TD-LY01



BT-6



BT-5



BT-10



BT-4



BT-3



BT-2



T188

T101

T102

T116

T107

HUIZHOU CHENG YUE ELECTRONICS CO., LTD 惠州市诚悦电子有限公司

Tel: +86 134 1300 5581 E-mail: 772051824@qq.com 地址: 广东省惠州市博罗县石湾镇鸾岗谢屋工业园
Add: Shiwan Town Luan Gang Xie Wu Industrial Park, Boluo County, Huizhou City, Guangdong Province



WeChat

www.ejrr.com 51



宝惠通

BAOHUITONG

融入你生活的声音

YOUR BEST CHOICE~

The voice that blends into your life



BHT-115



BHT-TT9



BHT-T3
MINI WAREHOUSE

JUST LIKE VISITING EVERY SCENE
THAT TOUCHES THE HEARTSTRINGS IN PERSON



BHT

BT129



BHT

BT128



BHT

TT2



BHT

TT5



BHT

TT6



BHT

T2

专利号: ZL 202030176050.1

A WIDE RANGE OF STYLES FOR YOU TO CHOOSE FROM



BHT-BT14

专利号: ZL 202130526329.2



BH7-300N



BH7-M001

with microphone



BH7-602

with microphone



BHT-JB182

with microphone



BHT-689

with microphone



BHT-2118

with microphone



BHT-820

with microphone



BHT-841

with microphone



BH7-816

with microphone



BHT-820

no microphone



BHT-689

no microphone



BHT-JB335



BH7-505X

headset



BH7-400A

headset



BH7-315

headset



BH7-819

HUIZHOU BAOHUITONG HARDWARE PLASTIC MOULD ELECTRONICS CO., LTD.

Mob: +86 133-5277-4568 (Mr.Lv) +86 139-2684-1172 (Miss.Xu)

Tel: +86 752 6618481 QQ: 915258381 E-mail: baohuitong@outlook.com

Add: 366 Jinxing Road, Liboshui, Shiwan Town, Boluo County, Huizhou City, Guangdong Province



WeChat



WeChat



Elink show
shop app

杰之升

Huizhou Jiezhisheng Electronic Technology Co
电子科技有限公司(惠州市)



YT-023



JZS-000



JZS-000 Color: ●●



专利号: 202430470763.7

YT-022 Color: ●●●



JZS-603 Color: ●●



JZS-704 Color: ●●●



JZS-604 Color: ●●●●



JZS-706 Color: ●●



JZS-707 Color: ●●



JZS-708 Color: ●●



JZS-709 Color: ●●●●



JZS-710



JZS-711 Color: ●●●



JZS-712



JZS-713 Color: ●●●●



JZS-714



JZS-715



JZS-716



除了外观花纹差异
功能完全一样

HUIZHOU JIEZHISHENG ELECTRONIC TECHNOLOGY CO

TEL: +86 15360927978(MR.LONG) E-MAIL: 670382190@qq.com

ADD: No. 88, Zhonggang Yewu New Village, Boluo County, Huizhou City, Guangdong Province



WECHAT

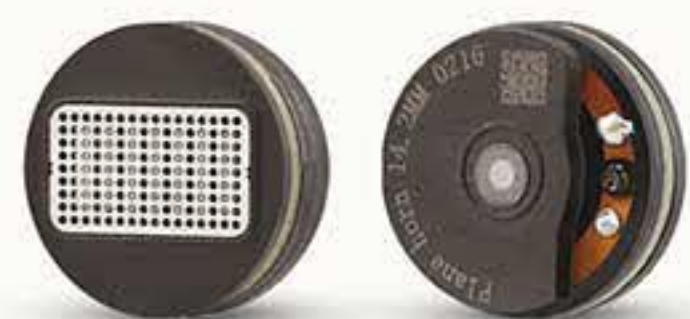
WhatsApp



MIAOZE

M206

With the new 14.2 flat panel speakers, you can feel the exaggerated resolution and balanced three-frequency performance, the natural and realistic sound, the quality of the cavity design, the M206 has certain requirements for the front end and requires some investment in the front end.



14.2 Flat diaphragm horn



M99

Hifi Headphones



- Natural and authentic sound
- More cohesive sound
- Quality chamber design
- Cleaner bottom end

Sound density, sense of energy, sound field compared to other flat headphones is a leap forward, low and mid-range frequencies are the highlight, low frequency elasticity, sound cohesion is not diffuse, the collection is very clean, dive huge deep, you can smash to the chest position; excellent mid-range thickness, tooth and grain polished very smooth, no harsh feeling at all, rich in emotion; high frequency overall restraint, extension is moderate, belong to the delicate and soft towards, not deliberately pursue the sense of gloss.

M19

Hifi Headphones



MZ01 Hifi Headphones

- Product Name: moving coil HIFI ear cup
- How to wear: In-Ear
- Package type: Official Standard
- The horn unit: moving coil 14.2mm
- Sensitivity: 109dB/mW
- Frequency range: 10HZ-40000HZ
- wire stock: 078mm 2pin The wire can be replaced
- Impedance: 44Ω
- Place of origin: Made in China
- Brand maker: MIAOZE
- Earshell material: aluminium alloy
- Manufacturer: Dongguan MIAOZE Acoustics Technology Co.Ltd.
- Implementation standards: GB/T 14471-2013
- Recommended use: monitor philharmonic



14.2 Ceramic diaphragm horn



The nano-ceramic diaphragm technology has been creatively developed using laboratory-grade nano-technology; defining a new era of sound in dynamic earbuds; comparable in quality to multi-unit moving iron earbuds, which has been well received by audiophiles



MZ02 Silver Moon

- Product Name: In-Ear Earphones
- How to wear: In-Ear
- Package type: Official Standard
- Sensitivity: 108dB/mW
- wire stock: 078mm 2pin The wire can be replaced
- Impedance: 32Ω
- Place of origin: Made in China
- Brand maker: Dongguan miaoze Electro-acoustic Technology Co.Ltd.
- Manufacturer: Dongguan
- Implementation standards: GB/T



10mm graphene moving coil speaker



12.5mm flat diaphragm horn unit

SELF-DEVELOPED HORN

Although it is a moving coil unit, but the taste of moving iron, in addition, especially valuable is to maintain the high quality of high-frequency resolution at the same time, the low-frequency aspects of no pressure at all, the sound is very full, listenable, the absolute flagship 12.5mm audiophile headphone unit! This unit is powerful and powerful low-frequency, sound clarity and soft and round, elasticity is strong and free, the sense of vibration is super HIFI sound, sound clarity, soft and round, strong and free.

ACCORDING TO PERSONAL PREFERENCE CAN BE
CHANGED DIFFERENT CORE CONFIGURATIONS OF THE WIRE

DONGGUAN QIAOTOU XIANGZI FACTORY

Mob: +86 150 2400 7979 (Mr.Zuo) E-mail: zuohaibo1983@126.com
Web: <https://xiangzi168.1688.com/>
Add: Dazhou No.1 Industrial Zone, Qiaotou Town, Dongguan City Guangdong Province



Alibaba

WECHAT



DONGGUAN SWEET PIE ACOUSTIC TECHNOLOGY CO., LTD
东莞市悦耳派声学科技有限公司

Sweet pie

COMPANY PROFILE

Engaged in the speaker industry for more than 30 years, senior industry experience, accurate for your headset products, EQ tuning! Physical tuning! Highly automated production! Cost reduction and efficiency! Create a win-win situation!

从事扬声器行业30多年, 资深行业经验, 精准为您耳机产品, EQ调音! 物理调音! 高度自动化生产! 降本增效! 共创双赢!



ALWAYS HAVE PEACE OF MIND WITH
 SWEET PIE ACOUSTIC

悦耳派声学让您永远放心

FACTORY DISPLAY

CRAFTSMANSHIP
 TO CREATE PERFECTION



WeChat Mr. Liu



WeChat Mr. Liu

E-mail: yep868@163.com

+86 13377796658 Mr.Liu
 +86 15322418188 Mr.Liu

Add: No. 8, Industrial North Road, Chikan Village, Shipai Town, Dongguan City

地址: 广东省东莞市石排镇赤坎工业化北路二路8号

X
HIFIFREEMAX



GB-04

Colour: ■ ■



GB-05

Colour: ■ ■



DB-03

Colour: ■ ■

GB-08

Colour: ■



DB-02



WX-08



DB-01



GB-10



GB-03



GB-09



GB-06



WX-Y



WX-X

DONGGUAN HIFIFREEMAX INTELLIGENT TECHNOLOGY CO., LTD.

东莞市海菲麦克斯智能科技有限公司

181 4878 0888 (赵先生)

ELEVATOR NO. 8, 2ND FLOOR, BUILDING B6, MEIHEXI SCIENCE AND TECHNOLOGY PARK,
MINGYUE 2ND ROAD, SHIWAN TOWN, BOLUO COUNTY, HUIZHOU CITY, GUANGDONG PROVINCE
广东省惠州市博罗县石湾镇明月二路美合科技园B6栋2层8号电梯

X
HIFIFREEMAX



NIFENG ELECTRONICS

广州市逆风电子有限公司

GUANGZHOU NIFENG ELECTRONICS CO., LTD.

广州市逆风电子有限公司

Add: 2F, No.10, Eight Alleys, Chaonanfang, Caiyi Village, East Ring Street, Panyu District, Guangzhou City

地址: 广州市番禺区东环街蔡一村朝南坊八巷10号二楼

NINGYUAN NIFENG ELECTRONICS CO., LTD.

宁远逆风电子有限公司

Add: Lianhuatang Resettlement Site, Lianhua Road, Shunling Street, Ningyuan County, Yongzhou City, Hunan Province

地址: 湖南省永州市宁远县舜陵街道莲花路莲花塘安置地



YP-07-C

A1-C

ZJ-03-C

E-mail: lifeng@gznfdz.cn

+86 137 5106 4447 Mr.Li (Domestic sales)

+86 135 8030 4356 Miss Wang (Overseas sales)



Mr. Li



Miss. Wang

3.5 Port



A1

A2

A3

C100

C300

C500

D31

Q3

Q5

Q11

TYPE-C PORT



A2-C

A5-C

Q1-C

S3-C

E01

C100-C

C300-C

C500-C

D21-C

E05

CONVERTE



YP-05

YP-05-C

ZJ-01-C

ZJ-01-i

YP-07

YP-07-C

YP-07-i

ZJ-03-C

ZJ-03-i



4 In-House Factories
1000+Person-Level Production Capacity
OEM & ODM Service(from designing)
30+ Years of Experience in the Industry
Just for You



W33

Ear-clip Bluetooth headphones

Battery Display Available
Specially Tuned Higher Volume Level
Smart Touch Screen Available
Bluetooth Versionv: V5.4-V6.0



005

Sporty In-ear TWS Earbuds w. Earhanger

Bluetooth Version: V5.4-V6.0
Battery Display
Deep Bass Tuned Available
Gaming Mode Applied



007

Open Wearable Stereo

Battery Display Available
Specially Tuned Higher Volume Level
Gaming Mode Available
Bluetooth Versionv: V5.4-V6.0



PRODUCT

W01



Semi-in-ear TWS Earbuds
Bluetooth Version: V5.4
Gaming Mode Applied

W02



In-ear TWS Earbuds
Bluetooth Version: V5.4
Gaming Mode Applied
8M+ Sales Volume Around the World

W02 Plus



In-ear TWS Earbuds
Bluetooth Version: V5.4-V6.0
Gaming Mode Applied
Battery Display

W03



Semi-in-ear TWS Earbuds
Bluetooth Version: V5.4
Battery Display/Logo Lighting Display
Gaming Mode Applied

W07



Semi-in-ear TWS Earbuds
Bluetooth Version: V5.4
Strap Hole Available
Gaming Mode Applied

W18



Semi-in-ear TWS Earbuds w. Hand Gripper
Bluetooth Version: V5.4
Battery Display
Hand Gripper Counter Function for Exercise
Gaming Mode Applied

W25



Semi-in-ear TWS Earbuds
Bluetooth Version: V5.4
Gaming Mode Applied

W32



TWS w. Touch Screen
Smart Touch Screen Available
Built-in EQ Adjustment
Gaming Mode Available
Bluetooth Version: V5.4-V6.0
Customizable Brand Lock Screen

Q6



Neck Band w. Metal Earpiece
Bluetooth Version: V5.2-V5.4
Gaming Mode Applied

Q7



Neck Band w. Plastic Earpiece
Bluetooth Version: V5.4
Gaming Mode Applied

H8



Neck Band w. Metal Earpiece
Bluetooth Version: V5.4
Gaming Mode Applied

05 Plus



Neck Band w. Plastic Earpiece
Bluetooth Version: V5.0-V5.4
Gaming Mode Applied

HE05X II



Neck Band w. Metal Earpiece
Bluetooth Version: V5.0-V5.4
Gaming Mode Applied

006

Open Wearable Stereo w. Touch Screen

Built-in EQ Adjustment
Multi-language User Interface
Bluetooth Version:V5.4-V6.0
Specially Tuned Higher Volume Level
Gaming Mode Available
Customizable Brand Lock Screen

008

Open Wearable Stereo

Bluetooth Version: V5.4-6.0
Gaming Mode Applied
Specially Tuned Higher Volume Level
Customized Brushed Metal Logo Banner
AI Function Available



Foshan Shengzhihui Electronic Technology Co., Ltd.
HQ Address: No.5 Xinda Industrial Zone, Shunde District, Foshan City
Branch Factory1: Jiangkou Factory, No. 60, Hejiang First Road, Jiangkou Town, Fengkai County, Zhaoqing City, Guangdong
Branch Factory2:Nanfeng Factory, No. 18, Dayuan Road, Jiuxiang 14th Team, Nanfeng Town, Fengkai County, Zhaoqing City, Guangdong
Branch Factory3:Cangwu Factory, No.E568, Jinlong Huating, Shiqiao Town, Cangwu County, Wuzhou City, Guangxi

Email:yang@sangfai.com
TEL: 86-0757-27333777



English Service
Leo Yang



项目经理
刘先生



项目经理
汪先生



Shenzhen YinYe Electronics Co., Ltd

Professional manufacturer of active noise-cancelling (ANC/ENC) headphones for wearing on the head, accepting OEM/ODM orders for production.



A1-7



AF2



A23



A6



B200



B58



B3



B18



B300

SHENZHEN YINYE ELECTRONICS CO., LTD

szktzit@163.com (David Liu)

Tel: +86 132 4665 9400

Add: 3rd Floor, Building A3, Jiujiu Tongxin Industrial Zone, No. 82 Tongxin Road, Baolong Street, Longgang District, Shenzhen



ancenc.1688.com



David Liu



SHENZHEN MEIEGO TECHNOLOGY CO.,LTD

U15



U35



U32



✓ Our company has passed the ISO9001 quality system certification and the international BSCI certification. More certifications are in the process of being pursued!



ISO 9001



Business Social Compliance Initiative

szjazza@163.com (David Liu)

BU19



U17E



D3



Tel: +86 132 4665 9400

Add: 3rd Floor, Building A3, Jiujiu Tongxin Industrial Zone, No. 82 Tongxin Road, Baolong Street, Longgang District, Shenzhen



szjazza.1688.com



David Liu

D1



U11



JHT

GAME MODE
ANC

M2



X8



NC13



NC08



NC11



80567b



LB-29



NC12

NC08-SP
SOLAR CHARGING

SHANTOU CHAOYANG GURAO KINGHOT ELECTRONIC ., LTD

Contact number: Mr. Liu +86 158 1512 5958

Email: 156615156@qq.com

Address: East Side of Xianpo Road, Raozhong Road, Gu Rao Town, Chaoyang District, Shantou City

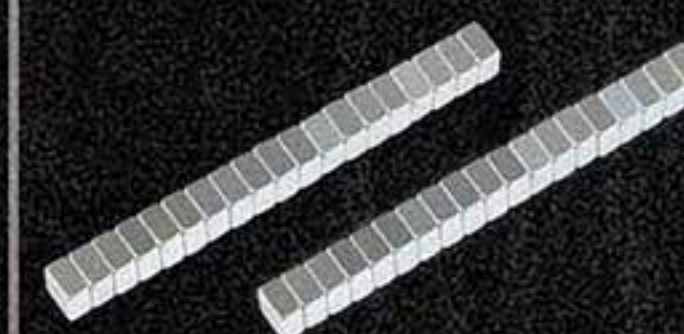
WECHAT
QR CODE

东莞市迈科磁业有限公司

DONGGUAN MAIKE MAGNETIC INDUSTRY CO., LTD

迈科磁铁
迈向未来Maiko magnet
Step into the future

MK-04



●MK-01



●MK-02



●MK-03



●MK-05



●MK-06



●MK-07



●MK-08



●MK-09



●MK-10



●MK-11



●MK-12



●MK-13

东莞市迈科磁业有限公司 DONGGUAN MAIKE MAGNETIC INDUSTRY CO., LTD

TEL: MR.Lin +86 13537141840 +86 13924338298 E-MAIL: 640607150@qq.com

ADD: Building 3, No.8 Xintai Road, Shilong Town, Dongguan City, Guangdong Province

E-Link show
store 2020

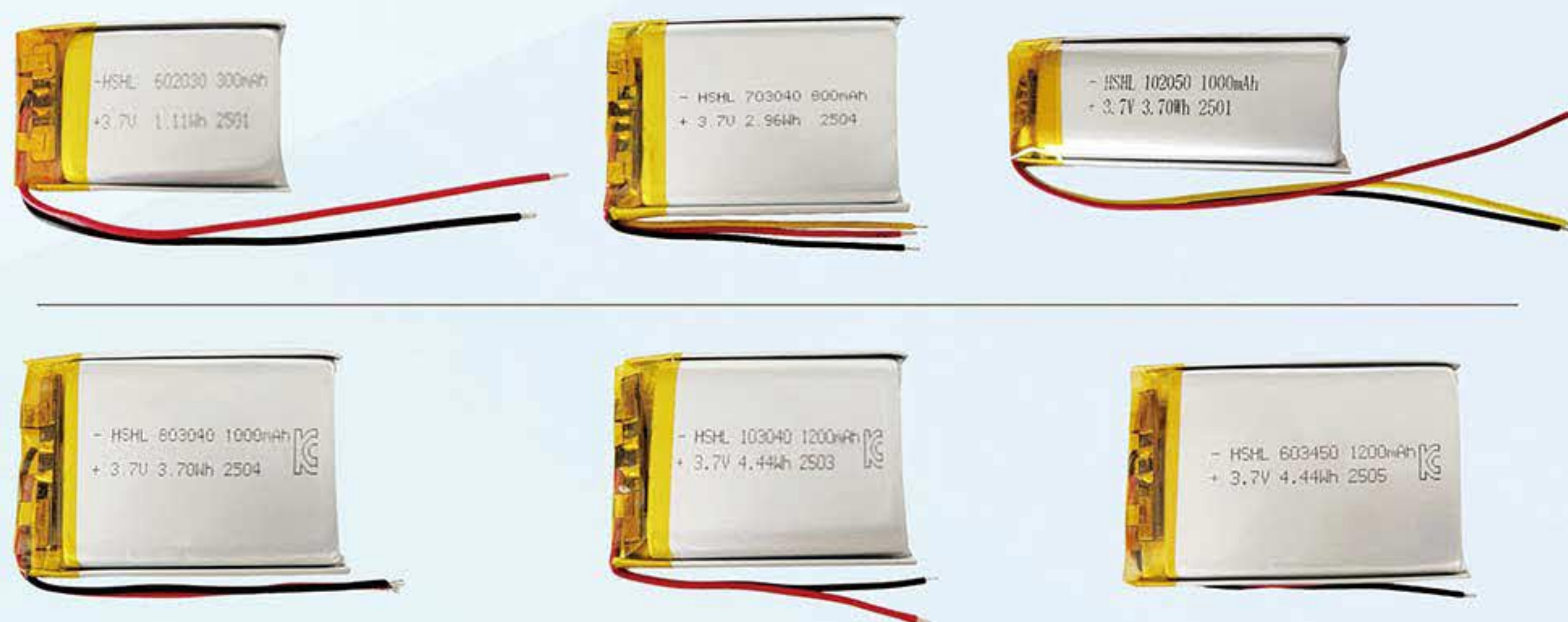
Dongguan Huasheng Huilian Technology Co., LTD

东莞市华盛慧联科技有限公司



KC.CE.CCC.UN383.MSDS.IEC62133

SERIES CERTIFIED BATTERIES



PROFESSIONAL PROVIDER OF

LITHIUM BATTERY SOLUTIONS FOR BLUETOOTH HEADPHONES

专业蓝牙耳机锂电池方案解决商

+86 180 2915 3988 Mr.Zeng 曾先生

Dongguan Huasheng Huilian Technology Co., LTD

Add: 4th Floor, No. 161, Yuanshan Road, Chashan Town, Dongguan City

地址: 东莞市茶山镇圆山路161号4楼

Maiceles® BLUETOOTH NOISE-CANCELLING HEADPHONES



Wireless Bluetooth
无线蓝牙



ANC takes the initiative to reduce noise
ANC主动降噪



Light and comfortable
轻便舒适



Q2-有线耳机



Q6-有线耳机



ANC-211



TWS-01



音箱-001.BIP.437



HUIZHOU MAICELES ELECTRONIC TECHNOLOGY CO., LTD

Mob: +86 150 1716 1362 (Mr.Yan 严先生)

E-mail: shukuaiini@163.com

Add: 广东省惠州市博罗县石湾镇宏明东路52号4楼

4F, 52 Hongming East Road, Shiwan Town, Boluo County, Huizhou City, Guangdong Province

+86 152 0796 6925 (Mr. Xiao 肖先生)



WeChat (Mr. Xiao)



WeChat (Mr. Yan)

HEADPHONES

ABYSS Diana DZ Review

Today, Marcus reviews the ABYSS Diana DZ, the company's latest flagship offering in their compact planar driver open-back headphone series priced at \$3995.

Disclaimer: This sample was sent to us in exchange for our honest opinion. Headfonics is an independent website with no affiliate links or status. We thank ABYSS Headphones for their support.

ABYSS DIANA DZ REVIEW

SUMMARY

Unless you are a hardcore vocal lover and nothing else the flagship ABYSS Diana DZ is an upgrade on the older TC model. It's more spacious and holographic sounding with top-notch clarity and a neutral yet refined tonal characteristic.

PROS

'Biggest' sounding Diana to date.
Improved comfort levels with new strap.
Stylistically more unique looking than older models

CONS

I miss the old toiletries bag styled carry case.

● Stock Cable

There are no stock cable changes for the Diana DZ. This is the same JPS Labs-designed cable ABYSS has packaged with the Diana series since the first edition rolled out.

That means custom 2.5mm plugs in a customized barrel design to create a beautiful seamless finish to the rear of the Diana DZ cups when connected. They are proprietary but not impossible to replace with alternative aftermarket options such as Mogami if you so wish.

The Cable's jacket is a thick but pliable rubber sheath over a 4-wire 24AWG custom copper alloy conductor which then divides into 2 wires per channel beyond the metal splitter using a transparent thinner jacket.

Though it matters less on open-back headphones, the stock cable is 100% microphonic-free even above the splitter. There is also an easy cable to work with having no memory retention or none of that annoying stiffness or flyaway quality you find on other stock headphone cables.

You can buy the cable with various lengths and plug options. My sample is 1.5m long and terminated with a 4-pin Neutrik jack but you can also choose 4.4mm, 3.5mm, and 6.35mm depending on user preference.

Changing the plug will not affect the cost but if you plan on getting a longer cable it's about \$50 per 0.5m additional length.

Note: The above pictures and texts are transferred from headfonics.com. If there is any infringement, please contact InRaiser.



THE TWO-IN-ONE PLUG HAS APPLIED FOR A UTILITY MODEL PATENT.

Patent Number: ZL2023 2 2583638.X

二合一专利插头，仿冒必究

SPECIALIZED PRODUCTION

Bluetooth headphones, mobile phone headphones, semi-finished headphone cables, audio adapters, data cables... Accepting OEM and ODM orders.



ZCD-137B



ZCD-138C



ZCD-101 K歌耳机



ZCD-108C



ZCD-143



ZCD-147C



ZCD-148



ZCD-150 K歌耳机



ZCD-310C



ZCD-149B



ZCD-214



ZCD-355



ZCD-361



ZCD-366



ZCD-441



ZCD-443



ZCD-446



ZCD-447



ZCD-448



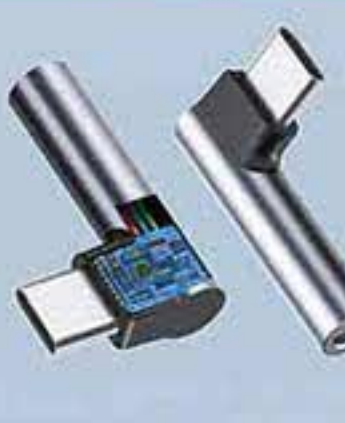
ZCD-449



ZCD-514



ZCD-567



ZCD-568



ZCD-571



ZCD-572



ZCD-575



ZCD-579

智创达®

E-mail: 340011011@qq.com

Miss Yang (MERCHANDISER) +86 180 7641 6285 Mr. Qin (SALES) +86 137 1736 7528

Aliwangwang ID: eontar QQ: 340011011 https://eontar.1688.com

Add: Guigang City, Guangxi Province, Pingshan Town, Pingnan County, Homecoming pioneer Park



Mr. Qin



Miss Yang



Alibaba

WIRELESS & HIFI

Noble Audio FoKus Apollo Review

Lynn reviews the Noble Audio FoKus Apollo, a hybrid 40mm dynamic and 14.5mm planar driver LDAC-capable set of wireless ANC headphones. They are priced at \$649.00.

Disclaimer: This sample was sent to me in exchange for my honest opinion. Headfonics is an independent website with no affiliate links or status. I thank Noble Audio for their support.



Carry Case

Inside the box, you find one of the best portable cases I have encountered, similar in feel to the excellent Focal cases. Instead of having a “detented” top to grasp, there is a nice grab handle on the larger end.

Sometimes those form-fitting cases can lack interior space somewhat, however, the Apollo provides the user with enough to carry all of the necessary items, including the boom mic, and both cables (USB-C charging and 3.5mm se for audio).

The look and feel of the case exude quality and tactility I appreciate it since the last thing you want is a slippery case. It is larger than its competitor’s cases, though.

I do wish for a bit more room though since the interior has a form-fitting design to hold all of the goodies in place.

An easy change would be to leave the 3.5mm cable at home, which would then give room for the charging cable and boom mic in the square indentation which lies between the slots for each headphone side.

However, if you do not plan to use the boom mic or prefer an alternative, it does come in its protective pouch.

The overall approach of the Apollo is one of luxury and a higher-end feel one has come to expect from Noble in their IEMs. It is good to see this carry over into their wireless headphones also.

● The final ZE8000 MK2 True Wireless System is the successor to the ZE8000 first-generation TWS we reviewed just over a year ago.

Summary

A preponderance of bass highlights a rich, full-noted signature from the FoKus Apollo.

There is a bit of bleed into the lower midrange, but this can also be construed as a deft ability to add weight to the lower mids, masking what might be considered a bloated upper bass region. That good heft down low translates into plenty of rumble when called upon.

The upper midrange and treble note deliver a distinct level of detail and clarity, that is neither too thin in weight nor too elongated in either attack or decay. A succinct character carries the top end, presenting a mostly open sound signature, that can add spatially to the character.

With a more vibrant character to it, unlike the “maturity” of the B&W Px8, you immediately recognize the strengths of the Apollo across the board.



Carry Case

Inside the box, you find one of the best portable cases I have encountered, similar in feel to the excellent Focal cases. Instead of having a “detented” top to grasp, there is a nice grab handle on the larger end.

Sometimes those form-fitting cases can lack interior space somewhat, however, the Apollo provides the user with enough to carry all of the necessary items, including the boom mic, and both cables (USB-C charging and 3.5mm se for audio).

The look and feel of the case exude quality and tactility I appreciate it since the last thing you want is a slippery case. It is larger than its competitor’s cases, though.

I do wish for a bit more room though since the interior has a form-fitting design to hold all of the goodies in place.

An easy change would be to leave the 3.5mm cable at home, which would then give room for the charging cable and boom mic in the square indentation which lies between the slots for each headphone side.

However, if you do not plan to use the boom mic or prefer an alternative, it does come in its protective pouch.

The overall approach of the Apollo is one of luxury and a higher-end feel one has come to expect from Noble in their IEMs. It is good to see this carry over into their wireless headphones also.

Bluetooth

With Bluetooth 5.3, I found latency to be quite good no matter what device I used. The lowest level seemed to be from my iPhone 13 Pro Max, while the HiBy R4 did struggle a bit on some videos with delay. I play this down to as much about the R4 and video, instead of the Apollo.

The initial pairing was straightforward, and it wasn’t until I realized that the Apollo would automatically connect to more than one device (after the initial connection), that I changed from connecting every time by purposely using the connect feature to simply connecting a single device.

Switching between two previously connected devices was as easy as going into your Bluetooth settings and connecting (without resetting your BT connection as I had erroneously done).

The multi-point connection was stable and easygoing between phone calls and back to the music automatically.

Note: The above pictures and texts are transferred from digitaltrends.com. If there is any infringement, please contact InRaiser.

3C DIGITAL INDUSTRY PLATFORM

Branding For You

- HIFI Speakers
- Bluetooth Speakers
- Outdoor Speakers

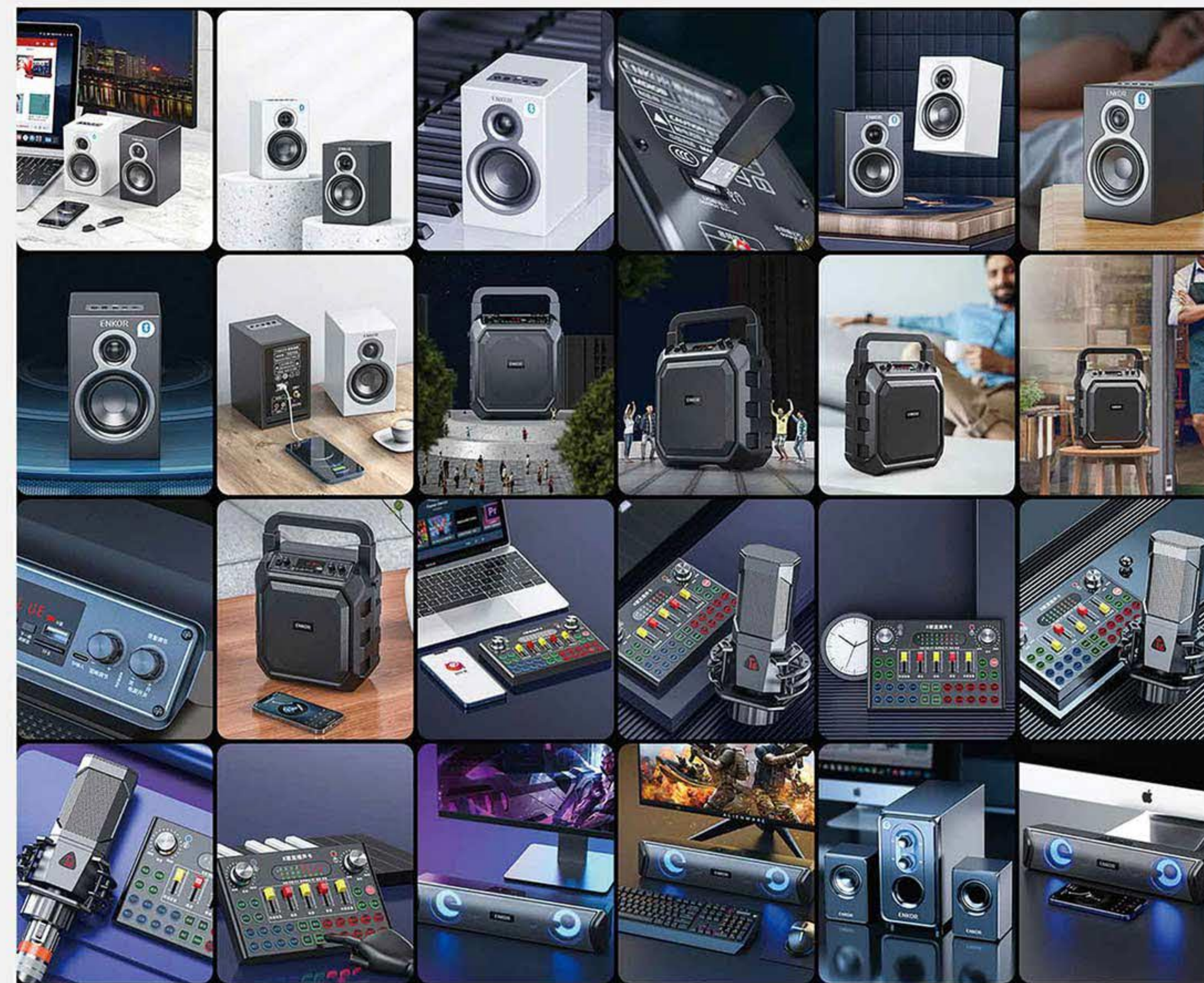
ENKOR

E10S

GOOD SOUND QUALITY
HIGH PERFORMANCE SPEAKERS

EXTRAORDINARY EXPERIENCE

- 4 INCH HIGH PERFORMANCE SPEAKER
- SIMPLE AND COMPACT CABINET
- MASTER VOLUME LED BLUE LIGHT EFFECT
- CAN READ USB/SD CARD



Founded in 2003 in Shenzhen, China. Shenzhen high-tech enterprise, well-known audio brand and audio product solution provider in the fields of multimedia speakers, home video and smart home. At present, Enke is mainly engaged in innovative R&D, design, production and sales of multimedia speakers, HIFI speakers, Bluetooth speakers, professional audio, home speakers and smart speakers. Its existing Shenzhen Enke Electronics Co., Ltd., Jiangxi Enke Technology Co., Ltd., Jiangxi Ganzhou Mushi Electronics Co., Ltd.

Fifteen years of intensive cultivation in the international and domestic markets have accumulated strong R&D and manufacturing strength, perfect quality management system and market supply capacity. For a long time, it has successfully cooperated with the world's top 500 companies, and its products are sold well in more than 80 countries and regions in the world. Among them, the export of 5.1 series multimedia speakers is firmly in the forefront of the national counterparts.



ENKOR

Address: Building P, Building 0, Shengguang Industrial Park,
Zhentou Road, Huangpu, Baoan District, Shenzhen City,
Guangdong Province

Tel: 075527337168
4001-138-168
Fax: 075581461101 Email: Sales@enkor.net

Welcome to buy, there is always a product you like

NEW TREND TWO IN ONE BOTH BLUETOOTH EARPHONES

▶▶-----IT'S BLUETOOTH AUDIO AGAIN

FREE
SWITCHING



Ultra thin and lightweight
Fashion fabric mesh
HD Voice

HFO1

Bluetooth

DONGGUAN SHISHISHUN TECHNOLOGY CO., LTD

+86 136 8686 7718 +86 136 8955 7200 jabcam@foxmail.com

2nd Floor, Building 2, No. 274 Guanlong Road, Xiaqiao, Dongcheng Street, Dongguan City, Guangdong Province, China

INTEGRATED SPEAKER
MICROPHONE

PALMTOP MICROPHONE



ONE CLICK SOUND
CANCELLATION

REVERBERATION SOUND
EFFECT ADJUSTMENT

HIFI SOUND QUALITY

HFO9

MORE EXCITING SHINING HELLO LOOK

I HARFU: HELLO, HAPPINESS!

● ● ●



HF18W Bluetooth



HF10 Bluetooth



HF16 Bluetooth

ONE PRODUCT WITH MULTIPLE USES LIFE EDITED
5D SURROUND SOUND EFFECT
AI INTELLIGENT LITTLE PRINCESS

Multimedia Bluetooth speaker J007

Touchable Dynamic Music
Easy to navigate multiple scenarios
Hifi original sound is pure and transparent



BLUETOOTH CONNECTION
CONNECTION TO MOBILE PHONES



BLUETOOTH CONNECTION
TO COMPUTER



OUTDOOR SCENES



SPEAKER BROADCASTING

Small and portable, practical bluetooth speaker

Bluetooth audio style

Provide you with more choices of Bluetooth audio styles ...



FOSHAN NANHAI DISTRICT YINBEIER ELECTRONICS FACTORY

Tel: +86 182 0207 9459
Add: 408, 4th Floor, Elevator 1, West Zone, Building A, No. 116 North Lishui Avenue, Lishui Town, Nanhai District
Foshan City, Guangdong Province

Wireless charging

BLUETOOTH CLOCK SPEAKER

Wireless charging is suitable for various mobile phones that support wireless charging

WD-301

YOUR BEDSIDE SPEAKER

Wireless Bluetooth connection × Enjoy music while charging



Wireless charger



USB charge OUT



Bluetooth



Speakerphone



Alarm Clock



FM Radio



Bass Enhance



AUX



Card Player

MULTIPLE FUNCTIONS AND IMPRESSIVE APPEARANCE

Spend a pleasant day with you



Wireless Charger

Put your charging cables away and wireless charge your smartphone!



FM Radio
Listen to your favourite FM radios anytime

Charge 2 Phones simultaneously
With USB charge out port for cable charging or use both wireless and cable charging at the same time



Bluetooth



Bass Enhance Button

SOME OF THE BLUETOOTH SPEAKERS ON DISPLAY



WIRELESS CHARGING BLUETOOTH STEREO

Wireless charging Bluetooth music clock alarm clock 5-in-1 dual coil wireless charging audio

WD-200



SHENZHEN LANLIAN DIGITAL TECHNOLOGY CO., LTD

Tel: +860769 89608802 / +86 13 7151 79844

Add: 424 Qingfeng Building, No. 11 Longgang Road, Pingnan Community, Longgang Street, Longgang District, Shenzhen City, Guangdong Province

ABOUT US

Shenzhen Chaojin Electronics Co., Ltd., founded in 2007, is a manufacturing enterprise engaged in the production and sales of middle and high-end health consumer electronics, and is committed to the research and development of electronic products for aromatherapy humidifiers.

4500m²
cover an area

10articles
line

230+people
Number of employees



THIS IS A SPEAKER THAT CAN BE HUMIDIFIED

MULTIFUNCTIONAL BLUETOOTH SPEAKER

HE'S DIFFERENT FROM OTHER BLUETOOTH SPEAKERS

CJ-501



M-01



BLUETOOTH MUSIC
AROMATHERAPY MACHINE

M-02C



Mobile Bluetooth
connection

WE DON'T JUST PRODUCE SPEAKERS

PROFESSIONAL RESEARCH AND
DEVELOPMENT AND PRODUCTION
OF HOUSEHOLD APPLIANCES



CJ-736

Clock
aromatherapy humidifier



CJ-501L

Clock+alarm clock
aromatherapy humidifier



JX-505

Music Clock
Aromatherapy humidifier



H8-1

Aromatherapy humidifier



H9

Bonfire aromatherapy machine



U-20

Flame lamp
aromatherapy humidifier



X-01

Aromatherapy humidifier



CJ-733

Intelligent aromatherapy machine



CJ-734

Himalayan Salt Lamp Diffuser

SHENZHEN CHAOJIN ELECTRONICS CO., LTD

Tel: +86 180 0258 3768

Add: 201, 301, 401, Building A5, Datianyang Industrial Zone (Huamei Road Section), Dongfang Community
Songgang Street, Bao'an District, Shenzhen City, Guangdong Province

BLUETOOTH SPEAKER

MULTIFUNCTIONAL
BLUETOOTH SPEAKER

SALUTE TO CLASSIC MEMORIES RETRO

NEW COLORS BRING CHARM NEVER LET GO OF GOOD TIMES



OUTSTANDING APPEARANCE AND FUNCTIONALITY

Wood grain
Solid woodLightweight and convenient
Comes with its own lanyardBluetooth 5.0
Technology upgradeHD sound quality
Realistic and natural sound qualityWOODEN
BLUETOOTH SPEAKER

Mini stereo, small body, big capacity, handy, compact and convenient, full-range speaker, sharp sound levels, full of details, bass, so that the heavenly music into every occasion of your life, Bluetooth connection, fast and stable connection Easy to enjoy wireless music.



BLUETOOTH LINK



WOODEN BOX



STRONG BASS



MINI PORTABLE

10 METER
CONNECTION

LONG RANGE



M7



D30



M8



K5



K5A



N10



SHENZHEN KAIJASON ELECTRONICS CO., LTD

Tel: +86 18806661500 (Mr Ran)

Add: 5th Floor, Building 9, Huixin Industrial Park, No. 88 Daxing Road, Yangwu Village
Dalingshan Town, Dongguan City, Guangdong Province



PORTABLE SMALL OUTDOOR HOME STEREO

MOBILE WIRELESS SOUND BOX

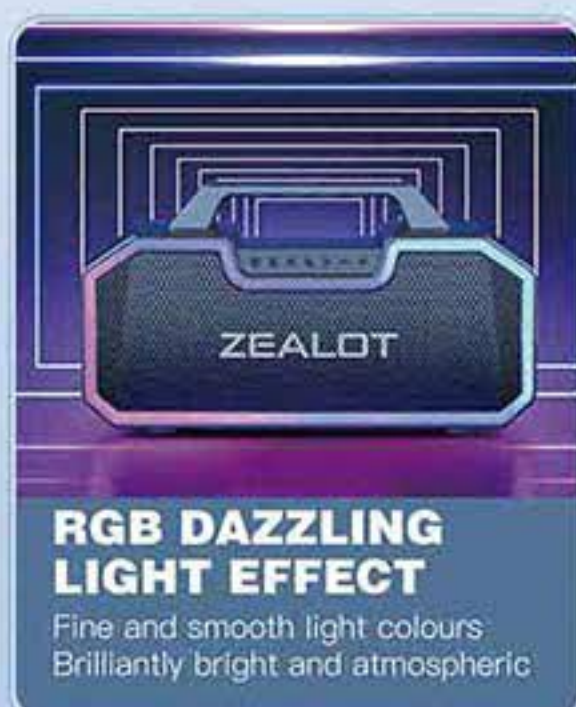
LARGE BATTERY LONG BATTERY LIFE

ONE MONTH STANDBY WITHOUT POWER 10 HOURS OF CONTINUOUS LISTENING



60W HIGH POWER

Surge in bass shock in treble
meet the needs of various scenes



RGB DAZZLING LIGHT EFFECT

Fine and smooth light colours
Brilliantly bright and atmospheric



3600MAH BATTERY CAPACITY

Large battery long battery
life for outdoor fun



BLUETOOTH 5.2

High-speed and stable connection
Extensive compatibility

WIRELESS BLUETOOTH SPEAKER OUTDOOR SMALL PORTABLE



S39

THE SOUND QUALITY
IS BEYOND IMAGINATION



S61

JOY IS NOT JUST
ONE WAY



S62

PORTABLE HOME CINEMA
MOBILE SUBWOOFER



S32

HIGH VOLUME AND STRONG
ENDURANCE



S53

57MM LARGE HORN



S51

PORTABLE HOME CINEMA
MOBILE SUBWOOFER



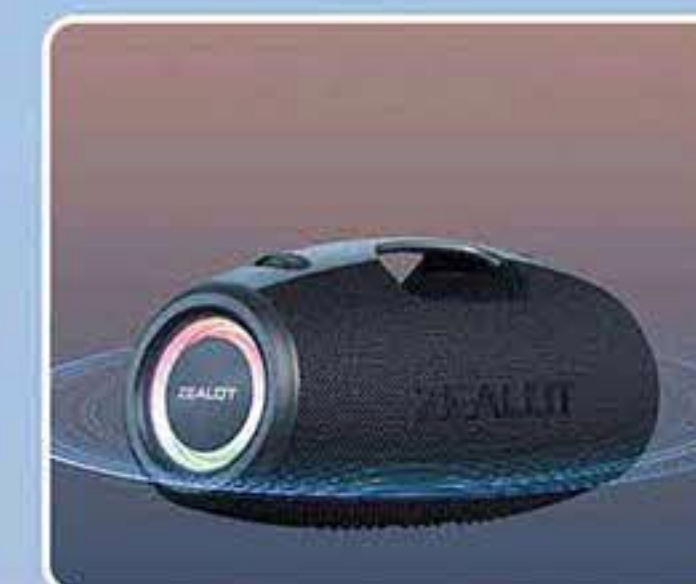
HIFI sound quality



Large 24000maAH battery



Four large speakers



100W large probability

ZEALOT®

SHENZHEN FANATICS DIGITAL TECHNOLOGY CO., LTD

Tel: +86 0755 29631825 Mob: +86 137 5109 0122 (Mr Chen)

Web: <https://shop1350579441570.1688.com>

Add: 401 and 501, Building 3, No. 8 Yongtai East Road, Baishixia Community, Fuyong Street, Bao'an District
Shenzhen, Guangdong



Bluetooth connectivity
Speaker

WATERPROOF

MULTIFUNCTION WIRELESS
SPEAKER

F11

PORTABLE
MULTIFUNCTIONAL
BLUETOOTH AUDIO



SHENZHEN LESHANG CREATIVE TECHNOLOGY CO., LTD

Tel: +86 755 21638400 +86 13824346343 (Mr li)

Add: 2nd Floor, No. 12 Hengnan Road, Guxing Community, Xixiang Street, Bao'an District, Shenzhen City, Guangdong Province

MULTIPLE STYLES TO CHOOSE FROM

MINI MUSIC BOX

F0



MULTIFUNCTION WIRELESS SPEAKER

F3



PORTABLE DESKTOP SPEAKER

XS MAX



BLUETOOTH
HANDSFREE
TF CARD
DISK
AUX
FM RADIO
...



DRM-W03

BLUETOOTH 5.0 STABLE CONNECTION

ONE IS GOOD BUT TWO
IS EVEN BETTER

PAIR 2 SPEAKERS TOGETHER FOR A
COMBINATION OF TOTAL 100W
POWERFUL STEREO SOUND

KEEP MORE ENERGY
ENJOY LONGER PLAY-
TIME



DOME DIAPHRAGM PORTABLE SUBWOOFER

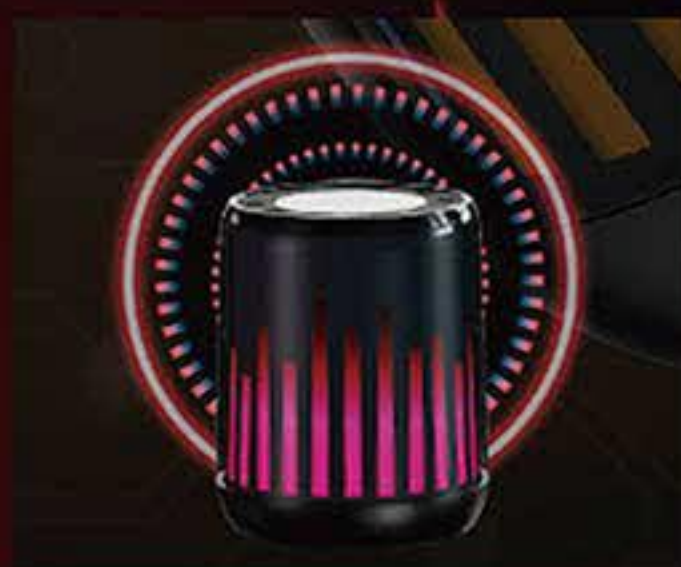
PROFESSIONAL SPEAKER
STARTING FROM APPEARANCE AND LOYAL
TO SOUND QUALITY

BK-201

ENJOY TIME WITH THE SOUND AND MOVEMENT



COLORFUL LIGHTS MOVE WITH MUSIC



LOUDSPEAKER

The lights move with the music showing great sound and color



High fidelity audio quality



Large battery capacity



Dazzling light effect



S16



BK202



BS-39D



SHENZHEN SHANGYITU TECHNOLOGY CO., LTD

Tel: +86-755 23777969 / +86 159 8958 8699 (Mr.sun)

Add: Ying'an Building, Industrial Road Tang Community, Longhua Minzhi Street Bao'an District
Shenzhen City, Guangdong Province

VITE30 威特宝

PORTABLE BLUETOOTH SPEAKER

THIS
SUMMER / MAKE A
DIFFERENT SOUND



COMPACT
KEEP IT IN CONTROL

SIMPLICITY
DERIVED FROM LIFE



A speaker that can speak
and sing, captures your
inner voice~

SHENZHEN WEITEBAO TECHNOLOGY DEVELOPMENT CO., LTD

Tel: +86 186 8481 9199 +86 183 2098 4982 (Mr Zhang)

Add: Building 6, Science Park, No. 10 Xianxiang Road, Xinsheng Village, Longgang District,
Shenzhen City, Guangdong Province

OUTDOOR PORTABLE BLUETOOTH SPEAKER



HIGH AND LOW FREQUENCY DIAPHRAGM
SURROUND SOUND GENERATION



APPROXIMATELY 6 HOURS OF UNLIMITED
BATTERY LIFE



IPX6 WATERPROOF WEATHER PROOF



6-COLOR RGB STUNNING LIGHT EFFECT

COLOURS



CARTOON BLUETOOTH SMALL SPEAKER

CUTE STYLING
SMALL STATURE, HIGH ENERGY



PORTABLE BLUETOOTH SPEAKER

SMALL AND EXQUISITE WITH AN EXTRAORDINARY VOICE

TAKE IT WITH YOU FOR OUTINGS, WITHOUT THE NEED FOR BATTERY ANXIETY. MUSIC ACCOMPANIES YOU FROM DUSK TO NIGHT, AND A SINGLE CHARGE CAN BRING ABOUT 8 HOURS OF MUSIC PLAYBACK.



EXCELLENT
SOUND QUALITY



TWS
INTERCONNECTION



BLUETOOTH
CONNECTIVITY



LONG RANGE



Sanag X6Plus

360 °SURROUND SOUND

TWS WIRELESS SERIES CONNECTION OPENS IMMERSIVE SOUND FIELD

ENJOY MUSIC TIME

M30S PRO

9D AUDIO SPATIAL SOUND A SOUNDSTAGE
THAT'S AS REAL AS IT GETS



BORN FOR MUSIC LISTENING
WITHOUT RESTRAINT

M25S PRO

ENHANCED UNIT DIAPHRAGM SUPER
LOW BASS IS AWE INSPIRING

EVERYWHERE AT
THE CENTER OF MUSIC



SHENZHEN SIYI MEDIA CO., LTD

Tel: +86 180 2536 2118 (Mr.Zhou)

Add: Yuehu Building, Minzhi Avenue, Longhua District, Baoan District, Shenzhen



Portable Bluetooth speaker

BLG SOUND YOUR STYL

- 360° panoramic sound effect
- Small and portable
- The sound quality has never compromised
- Waterproof and anti drop



COMPANY PROFILE

Audience was born in Shenzhen, China. It is a brand under Shenzhen Ziyun Technology Co., Ltd. Its main business is digital products, engaged in the design and research and development of audiovisual products. Its production base is located in Shenzhen, China, and it adheres to the "localization" brand operation.



NEW Y1

CINEMA LEVEL STUNNING SOUND EFFECTS
SOUND WAVE BEAST
SUBWOOFER · BLUETOOTH SPEAKER



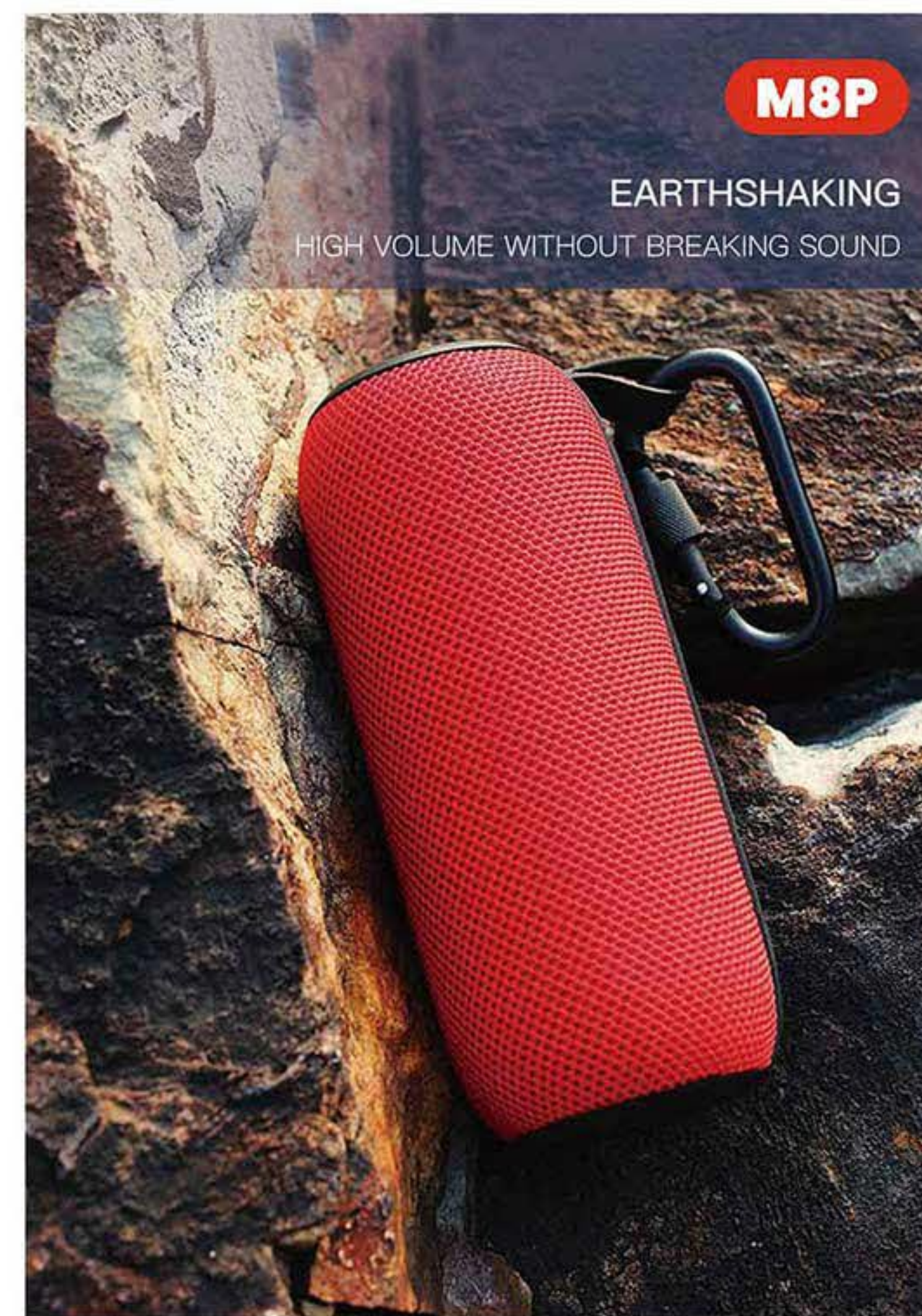
M15

PORTABLE BLUETOOTH SPEAKER
BORN FOR EXPLORATION



M8P

EARTHSHAKING
HIGH VOLUME WITHOUT BREAKING SOUND



SHENZHEN ZIYUN TECHNOLOGY CO., LTD

AUDIENCE

+86 15815547939 (Mr Yang) +86 0755-84821725 (Mr Zhu)

C315, Shangdinghao Creative Park, No. 7 Xiangye Road, Nanwan Street, Longgang District, Shenzhen City, Guangdong Province



FRUIT SPEAKER



THE SOUND IS
COMING FROM YOU
A WONDERFUL TIME
IN LEISURE

**SMALL AND EXQUISITE
SOUND YET EXTRAORDINARY**

The music world should also be colorful

KOALA BLUETOOTH SPEAKER

HIFI

EXCEPTIONAL
SOUND QUALITY

ASTRONAUT
BLUETOOTH SPEAKER

ULTRA LOW DISTORTION HORN

IT'S BOTH A DECORATION
AND A SPEAKER

Music is pleasant, warm and transparent
An immersive experience that restores the essence of music



SHENZHEN ZHONGSHILAN INDUSTRIAL CO., LTD

Mob: +86-0755 81470894 / +86 185 7554 9786(Mr Xiong)

Add: 5th Floor, Meijiamei Industrial Park, Guiyue Road, Daping Community, Guanlan Street,
Longhua New Area, Bao'an District, Shenzhen City, Guangdong Province



WATERPROOF BLUETOOTH SUBWOOFER

○ ● ○
BRAIDED LOOK
OUTDOOR PORTABLE



ADVANTAGE

THE HEART BEATS IN AN INSTANT



TWS interconnect
technology



Heavy bass
Dual speakers



Bluetooth 5.0
connectivity



Double
bass cone



HiFi lossless
sound



Chat and talk



Portable



Large capacity
Long battery life



IPX7 rated
waterproof



Outdoor wireless speaker

DYNAMIC ACCOMPANYING
PLAYING WITH JOY



Bluetooth 5.0 plan



360°
Surround sound



Long battery life



TWS Interconnection



Handsfree



Small and portable



SHENZHEN YALE ELECTROACOUSTIC CO., LTD

TEL: +86 0755 83739998 +86 13530779998 (Mr Lu)

ADD: Yujingtai Industrial Park, No. 35 Huaxing Road, Longhua Dalang,
Bao'an District, Shenzhen, Guangdong Province



MINI HOME KARAOKE SPEAKER

PROFESSIONAL KARAOKE SPEAKER MICROPHONE SET

THE SOUND OF HEAVEN... AND YOU DESERVE IT TOO



IMMERSE YOURSELF IN A WORLD OF MUSIC

BONE CONDUCTION SLEEP AID AUDIO



COMFORTABLE COLOR SCHEME × BONE CONDUCTION SENSING × NEWLY UPGRADED BLUETOOTH 5.2



SHENZHEN LEYINHENG TECHNOLOGY CO.LTD.

Mob: +86 138 2331 0970 (Mr.chen)

Add: China Guangdong Shenzhen Bao'an District Longhua Dalang Chajiaokan 2nd District Building 29 103

LOUDSPEAKER BOX

TIME MUSIC LAMP

BLUETOOTH TIME LIGHT SPEAKER

NEW VINTAGE TIME LIGHT SOUND SYSTEM



*It's a wonderful music
time as warm as candlelight.*

DONGGUAN LE'ANG ELECTRONIC TECHNOLOGY CO., LTD

☎ 0769-8600 3887 +86 188 0260 7420

📍 BUILDING A, JIANLI INDUSTRIAL ZONE, NO.1 QINGTANG ROAD, QINGXI TOWN, DONGGUAN CITY, GUANGDONG PROVINCE



Alibaba

LIGHT UP YOUR LIFE

INDUCTIVE LIGHTING

INTERESTING BLACK TECHNOLOGY



Warm light & Ambient light mode



Six functions



Inductive lighting

SHENZHEN KAIWU LIFE CO., LTD

☎ Tel: +86 0755 987654321 (Mr Zhang)

📍 Add: 3F-A, 3rd Floor, Building 2, Shangweiyuan Xinyuan Industrial Zone, Gushu Community, Bao'an District, Shenzhen City, Guangdong Province



WIRELESS & HIFI

Creative Aurvana Ace 2 Review

Today, Louis reviews the Creative Aurvana Ace 2, a new hybrid xMEMS solid-state and 10mm dynamic driver TWS equipped with ANC and AptX Lossless. It is priced at \$99.

Disclaimer: This sample was sent to me in exchange for my honest opinion. Headfonics is an independent website with no affiliate links. I thank Creative for their support.



Back in the day when the desktop DAC amplifier combo was uncommon, I commonly used PCI soundcards to improve my PC setup's sound quality tenfold over stock and usually looked into the Creative line of cards.point.

I've owned all their cards at one point, from the Recon3D, the Sound Blaster Z, and my favorite, the Audigy 2. They still make soundcards by the way. Go check out their AE-9, This ESS DAC-equipped soundcard is no joke.

So, here we are, years after our last review of the Aurvana Trio wired IEM in 2018, I have been tasked to review one of their latest products but it's not a sound card or wired IEM, it's their top TWS model, the hybrid xMEMS Aurvana Ace 2.



● how the Golden Ages performs and compares against some of its peers in this competitive TWS market.

Features

The Creative Aurvana Ace 2 is a full-featured ergonomic TWS model with a two-way hybrid xMEMS and dynamic driver setup, the latest aptX Lossless codec capability, and app integration. It is an improved version of the original Aurvana Ace TWS.

The most intriguing feature is the inclusion of an xMEMS high-frequency driver. These drivers have been rearing their heads at the shows but are limited in availability. I've been trying to get a hold of a couple of xMEMS IEM audiophile models but they're still in the oven.

Another standout point of the Aurvana Ace 2 is their compact design and small form factor. It's not that the design is unique, because it's almost identical in form to the original Aurvana Ace, but I like most of the original model's design's aspects so that's fine.

With this set, you also get to play around with their exclusive SXFI app that enables their super X-FI Spatial Holography DSP on this set which is an audio expander if you like that kind of DSP implementation.



Creative App

The Ace 2 Creative App is a simple one in that all the features are portioned into four sections; the equalizer, ambient control, button customization, and the settings which are accessible via the top right-hand cog wheel on the app's main screen.

The equalizer is a parametric type but offers no presets. The Parametric EQ is a bit hard to adjust and to be honest I would not use much equalization with this set or keep adjustments to a minimum because it's easy to push them into distortion.

The Ace 2 EQ includes bass and treble controls which is odd. They also affect the overall parametric curve. To be honest, that was my favorite part of the EQ because each band reflects on the parametric graph and each band is adjustable bringing me back to the days when tone controls were simple.

The other features let you customize the 6 touch control functions. The fourth section is the settings section which includes a low-latency mode, a firmware updater, an audio prompt on and off feature with device information, and a reset feature.

So far the system has detected five firmware updates. That seems to indicate that Creative is determined to give this set a good amount of support and is on top of things.

Cradle Design

The ANC on the Creative Aurvana Ace 2 is useable and doesn't produce any anomalies or noise but it seems effective mostly on far-away sounds but not on noise that's produced up close. It is an adaptive system but there's no way of adjusting the sensitivity or I couldn't find one.

The way I can describe it is that If someone talks to you, their voice will not be blocked out completely and neither will any nearby noise, but anything beyond 10 feet is blocked well.

Does the ANC affect sound quality? It does boost the overall volume a couple of decibels but tonality remains the same to my ears.

The Ace 2 Ambient feature works well since this set has a decent microphone system but still produces hiss. The passive noise suppression of this set is quite good and I used this set with these ANC features turned off most of the time.



Note: The above pictures and texts are transferred from headfonics.com. If there is any infringement, please contact InRaiser.



JUTAO KT60
WATERPROOF STEP HEART RATE
TOUCH SCREEN HIGH-DEFINITION

JUTAO CF96
FEMALE PHYSIOLOGICAL CYCLE
SMART WATCH

JUTAO ZX18
FIRST IN THE 1.57 DISPLAY
SCREEN INDUSTRY

JUTAO P8
COLORFUL AND LIGHTWEIGHT
METAL BODY

JUTAO T10Pro
REAL TIME TEMPERATURE
MONITORING

SMART WATCH

智能穿戴篇 / Intelligent Wearable Series

HIGH DEFINITION
LARGE SCREEN

- Control the smart home to obtain weatherforecast, turn on local alarm clock timer stopwatch function.
- Remote control photography for heart rate blood pressure, blood oxygen sleep monitoring.

SHENZHEN JUTAO TECHNOLOGY CO., LTD
CONTACT: 86+139 2379 9610
ADD: 526, NO. 76 TIANBEI SAN ROAD, LUOHU DISTRICT, SHENZHEN



INTELLIGENT WEARING AND SPORTS HEALTH

SHARING SMART LIFE

INTELLIGENT REMINDER

HEART RATE MONITORING



4G FULL NETWORK
CONNECTIVITY



5G WIFI



LARGE CURRENT



AMOLED SCREEN



PAI LI CHA



SWIMMING GRADE
WATERPROOF



AI POSITIONING



Z06

MULTIFUNCTIONAL INTELLIGENT BRACELET



ZL12T

MULTIFUNCTIONAL INTELLIGENT BRACELET



292

MULTIFUNCTIONAL LUMINOUS SPORTS WATCH



ZL11

MULTIFUNCTIONAL INTELLIGENT BRACELET



K1020S

QUARTZ WATCH



M-89.2

MECHANICAL WATCH

GUANGZHOU MOKO WATCH INDUSTRY CO., LTD

MOD: 86+15889947008(MISS.YANG)

ADD: ROOM 401-D976, NO. 129 DONGPING NORTH ROAD, YONGPING STREET, BAIYUN DISTRICT, GUANGZHOU, GUANGDONG



LED CIRCULAR SMART WATCH

lovely Fashion electronic watch Leisure Metal Male and Female Student Couple
Minimalist design, classic return to fashion trend, electronic watch with silicone strap for comfortable fit on the wrist.

REASONS FOR CHOOSING A SMARTWATCH

Enjoy intelligent life~

- 01 INTELLIGENT COMMUNICATION
- 02 ISUPPORT NFC ACCESS CARD
- 03 STRONG ENDURANCE
- 04 WIRELESS FLASH CHARGING
- 05 BLUETOOTH CALL
- 06 COMPREHENSIVE HEALTH MONITORING
- 07 OFFLINE PAYMENT
- 08 MESSAGE REMINDER



SMART PHONE WATCH

GET A DEEPER UNDERSTANDING OF SMART WATCHES



MULTI-SPORT MODE

WHETHER HIKING, RUNNING, CYCLING, BASKETBALL, FOOTBALL, SKIPPING ROPE, BADMINTON, YOU CAN ALWAYS KNOW YOUR HEART RATE, CALORIES AND OTHER PHYSICAL CONDITIONS, ADJUST THE INTENSITY OF EXERCISE.



LIFE ASSISTANT INFORMATION PUSH

AN EASY-TO-USE SMART ASSISTANT THAT DISPLAYS REMINDERS OF INCOMING CALLS SYNCHRONOUSLY WITH YOUR MOBILE PHONE, AND SUPPORTS SMS, WECHAT, QQ AND OTHER DIFFERENT APP INFORMATION PUSH, YOU CAN SEE IT RIGHT AWAY.



SHENZHEN JIAMING INFORMATION TECHNOLOGY CO., LTD

MOD: 86+13715350713

E-MAIL: 2377141064@qq.com

ADD: 1216, 12TH FLOOR, BLOCK A, BUILDING 2, OVERSEAS DECORATION BUILDING, NO. 122 ZHENHUA ROAD
HUAHANG COMMUNITY, HUAQIANG NORTH STREET, FUTIAN DISTRICT, SHENZHEN

SMART CALL WATCH

EXERCISE, NOT JUST STEPS

SIMPLICITY SUITABLE FOR DAILY PAIRING

20天

STANDBY TIME

8天

NORMAL USE



NO.1

ZERO MAX

1.91 INCHES

1.91-inch center large screen, ultra-thin body design, quick response to incoming calls and text messages, 100+exercise mode selection, 24-hour heart rate, blood oxygen, and pressure monitoring, 20 days of long battery life and low power consumption mode.



NO.4

I3 STUDENT

1.78 INCHES

The 4G multifunctional smartwatch has a 1.78-inch high-definition large screen, a full core intelligent water drop screen, and a large screen size. Not only is it faster than expected, but it also saves 30% of power. The speed of the large memory is unmatched, and WeChat video calls and online chats grab red envelopes.

NO.2

H60 YOUTH SMART

1.69 INCHES

Featuring a 1.69-inch, COF ultra retina high-definition full touch full screen display with a clear 240 * 280 high-definition resolution, wearing a watch allows for easy access to music control, breathing training, information viewing, and sedentary reminders, making life convenient and simple.



NO.5

H22 BLUETOOTH CALL SPORTS

2.02 INCHES

2.01 high-definition display screen, message reminder for communication at any time, supports various types of information reminders such as calls, WeChat, QQ, etc., and can be seen immediately when lifting a bowl. Whether it's driving, running, mountain climbing, or other outdoor activities, you won't miss every important message.

NO.3

H90 MULTIFUNCTIONAL

1.81 INCHES

1.81-inch high-definition screen, Bluetooth health monitoring, long-lasting endurance, sports mode, one click connection to watch for smooth communication, anytime and anywhere, AI voice assistant for personal companionship, healthy and long-lasting heart rate protection, and support for multiple sports modes.



NO.6

T93 SMART

1.83 INCHES

1.83-inch ultra retinal high-definition screen, large capacity battery for longer use, massive dial customization, information push for incoming calls, IP67 waterproof to meet basic waterproof requirements, intelligent monitoring and health protection, 110+sports mode.

DONGGUAN LIANGHAO PLASTIC ELECTRONICS CO., LTD

MOD: 0769-8218 6297 / 86+136 8257 5244

WEB: WWW.SYMSB.COM

ADD: ROOM 201, NO. 2, LANE 1, LIZHIYUAN STREET, YANGWU, DALINGSHAN TOWN, DONGGUAN CITY



WOMEN'S BRACELET GTOI SMARTWATCH

GODDESS EXCLUSIVE WATCH

THE COMPANY'S MAIN PRODUCTS INCLUDE SMART WATCHES, SMART BRACELETS, BLUETOOTH HEADPHONES, MOBILE POWER SUPPLIES, ENERGY STORAGE BATTERIES, PD FAST CHARGING AND OTHER INTELLIGENT ELECTRONIC PRODUCTS.



HEART RATE
MONITORING



INTELLIGENT
RECOGNITION



AOMLED

SMART WATCH

AMOLED full color large screen, temperature monitoring with 100 local dials for strong battery life, Bluetooth call AI voice assistant for local recording, TWS earphones for sports and health companion with 6 menus.



SLEEP MONITORING

Record the complete sleep structure, monitor sleep quality throughout the process, monitor real-time heart rate and blood oxygen, analyze big data, evaluate sleep quality, and combine sleep problems to help improve sleep quality and easily sleep well.



HEART RATE MONITORING

24-hour heart rate monitoring protects health throughout the day. Imported optical sensors, combined with heart rate algorithms, can quickly measure heart rate, blood pressure, blood oxygen, and other data, allowing you to understand your physical condition anytime and anywhere.



MULTIPLE SPORTS

Based on real-time heart rate monitoring and algorithm analysis, real-time presentation of relevant data allows you to understand your exercise performance, customize exercise plans, adjust exercise intensity, and every attempt will accompany you.



SHENZHEN NUOMA ELECTRONICS CO., LTD

MOBILE: +86 181 2452 6769

ADD: 6095 BAO'AN AVENUE, XINHE COMMUNITY, FUHAI STREET, BAO'AN DISTRICT SHENZHEN, GUANGDONG 607



SMARTWATCH

NEW T30

Designed specifically for outdoor sports
IP68 waterproof
1.6 inch high-definition round screen



Extra long
standby



AI voice



Intelligent
learning



Bringing users a better life experience Technology changes Life

SMARTWATCH

BLOOD PRESSURE BLUETOOTH WATCH

XP68 waterproof 400 milliampere ultra long standby ATS3085 single core dual mode 1G+4G memory Bluetooth 5.0 1.6 inch large screen with 24 sports modes. The high-definition retina screen has a smoother picture, smooth and flexible, pleasing fingertips, and no need to lift the wrist to view the time. Even in strong light, important information such as incoming calls, reminders, and sports can be clearly displayed.



WOMEN'S SMART WATCH

The intelligent small rigid watch combines strength and softness with youthful fashion, making it lightweight, comfortable, and colorful. With a silicone strap that is skin friendly, it is lightweight and comfortable to wear. The 1.09-inch full circle screen, paired with a narrow border design, fits snugly to your wrist and provides you with the best visual experience.



OUTDOOR SPORT WATCH

It is particularly important for outdoor watches to be sturdy and reliable, strong and durable. Whether it is in alpine snowfields or tropical jungles, they can resist tenaciously and respond calmly. Record various data in states such as table tennis, basketball, football, badminton, cricket, mountaineering, off-road, and climbing machines.



LELEJIA TECHNOLOGY SHENZHEN CO., LTD

mobile: +86 134 2879 9871

Add: B805, No. 249 Henan New Village, Songyuanxia Community, Guanhu Street, Longhua District, Shenzhen



HSD

Bluetooth SPORTS BRACELET

PHONE MESSAGE
SYNCHRONIZATION



Y68

SMART BRACELET

DISPLAY SCREEN: 1.44 INCH IPS

RESOLVING POWER: 128*128

MAIN CONTROL CHIP: HS6620D

TOUCH TYPE: SINGLE TOUCH

COMPATIBILITY: ANDROID/IOS

CHARGING METHOD: USB CHARGING

SUPPORTS BLUETOOTH: BLUETOOTH 4.0

SUPPORT DEVICE: OS8.0 OR ABOVE, ANDROID 4.4 OR ABOVE

H13

SMART BRACELET

DISPLAY SCREEN: FULL SCREEN TOUCH

WATCH SIZE: 50.9 * 4012.1MM

BATTERY: 150MAH POLYMER BATTERY

SYSTEM REQUIREMENTS: ANDROID 5.1

AND ABOVE, IOS8.2 AND ABOVE, SUPP-

ORTING BLUETOOTH 4.0

SCREEN RESOLUTION: 240x280



Guarding You
HEALTH MONITORING



No sense of wearing



IP67 waterproof



DONGGUAN HONGSHENGDA ELECTRONICS CO., LTD

Add: Room 601, Building 3, No. 3 Taixing Road, Shigu, Tangxia Town, Dongguan, Guangdong

SPORTS BRACELET M8

MULTIDIMENSIONAL HEALTH MANAGEMENT



MULTI-STYLE DIALS | NEW MULTI-SPORT MODE | MULTI-LANGUAGE SUPPORT | PORTABLE LIFE

MULTIFUNCTIONAL WATCH

4G fullnetwork connectivity



HIGH DEFINITION
LARGE SCREEN

i7 Plus



SPORT WATCH

full touch sports smartwatch



H180
SMART WATCH



S11
SPORT WATCH



Z15
SPORT WATCH



S33
SPORT WATCH

SHENZHEN SHANGSHENG INDUSTRIAL CO., LTD

Mobile: +86 186 6515 4999

Add: Phase 6 of Chuangke Mansion, No. 88 Zhugaotang Road, Pinghu Street, Shenzhen



SMART WATCH

ELDERLY POSITIONING WATCH

Wearing it on your hand
always caring for your health



T8-01

SAYINGTON

- TEMPERATURE MONITORING
- HEALTH WARNING
- INTELLIGENT APP
- TELEVISION ENTERTAINMENT



+30%

MORE DISPLAY THAN OTHER WATCHES

**ULTRA HIGH DEFINITION
LARGE SCREEN
REAL-TIME HEART RATE**

TBU-T6

SAYINGTON

- INTELLIGENT POSITIONING
- HEART RATE BLOOD OXYGEN
- ONE CLICK ALARM
- FREE DIALING



S55

SAYINGTON

PRIMARY MIDDLE AND
HIGH SCHOOL WATCHES



T8X

SAYINGTON

ONE CLICK CALL FOR
HELP CALLOCATION



T6001

SAYINGTON

FOREST PATROL
SAFETY WATCH



SYT-S10

SAYINGTON

BODY TEMPERATURE
MONITORING HOME
CARE WATCH

SHENZHEN GUOLIXING INNOVATION TECHNOLOGY CO., LTD

MOBILE: +86 0755-2150 0153 / +86 135 0288 8627(MR.LU)

ADD: 4TH FLOOR, BUILDING 2, HIGH TECH INDUSTRIAL PARK, NO. 156 FUYUAN 1ST ROAD, BAO'AN DISTRICT, SHENZHEN



Smart watch

Can make phone calls directly on the watch Whether it's an outdoor morning run, walking the dog downstairs, picking up the delivery, or taking out food Even if you don't have your phone, you can still answer and make calls and stay online.



HW28

HIGH DEFINITION SCREEN



T2PRO

CIRCULAR SCREEN MOTION



ZL02D

BLUETOOTH PHOTOGRAPHY

SMART SPORTS WATCH



Outdoor sport watch

The intelligent small rigid watch combines strength and softness with youthful fashion, making it lightweight, comfortable, and colorful. With a silicone strap that is skin friendly, it is lightweight and comfortable to wear. The 1.09-inch full circle screen, paired with a narrow border design, fits snugly to your wrist and provides you with the best visual experience.

400 mAh

IP68 waterproof

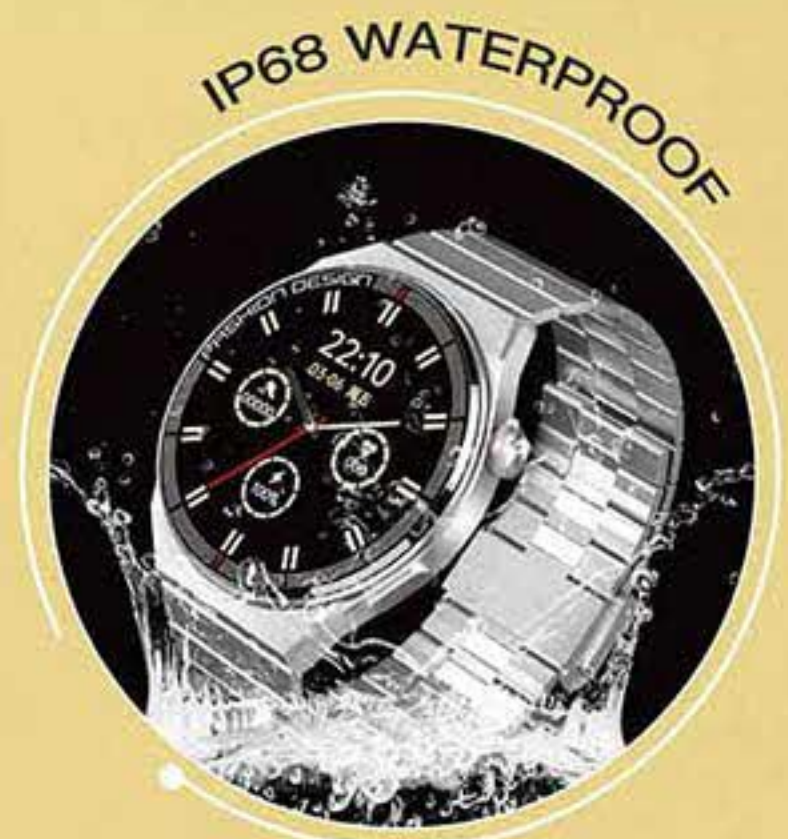


SHENZHEN OUPINDA TECHNOLOGY CO., LTD

MOBILE: +86 150 7995 5979 (Mr. Chen)

ADD: 312, Building C, No. 30 Aviation Road, Sanwei Community, Hangcheng Street, Bao'an District, Shenzhen

SMART WATCH



IP68 WATERPROOF

SAFE TO USE IN DAILY LIFE SCENARIOS SUCH AS WASHING HANDS AND RAINY DAYS



WIRELESS CHARGING STRONG ENDURANCE

10-15 DAYS
THE TYPICAL SCENARIO HAS A RANGE OF UP TO
4-6 DAYS
THE DURATION OF HEAVY USAGE SCENARIOS CAN REACH



SLEEP MONITORING SWEET SLEEP

RECORD SLEEP DURATION



GT3PRO PLUS

The 1.5-inch high-definition large screen provides a clearer and more vivid visual experience. The bedside light mode displays gravity sensing horizontal and vertical screens, supporting Bluetooth calls with high-definition original audio available at any time, and the long light mode of the off screen dial, Multi-functional NFC supports unlocking of community/company access control.

01 pay by sweeping a code



02 Sleep quality monitoring



03 Heart Rate Monitoring



04 Music Playback



05 waterproofing



06 Access control sensor



SHENZHEN CHENGHUA TECHNOLOGY CO., LTD

MOBILE: 0755-2890 8520 / +86 181 2468 7013

ADD: BUILDING 2, NO. 7 XIANGYE ROAD, XIALILANG COMMUNITY, NANWAN STREET, LONGGANG DISTRICT, SHENZHEN

▶ ALEXA VOICE SMART WATCH

300mAh BATTERY CAPACITY

HD HIGH DEFINITION LARGE SCREEN



▶ CUSTOM DIAL 14 SPORTS MODES

EXQUISITE DESIGN ADDS MORE MEANING TO THE EXTERIOR



14 SPORTS MODES TO ENJOY SPORTS TIME

MONITOR YOUR HEART RATE CHANGES

MONITOR YOUR SLEEP EVERY NIGHT

MONITOR YOURS TRESS LEVELS

ALWAYS CONNECTED ONLINE FOR CALLS

+30%
IMPROVED SCREEN DISPLAY AREA

▶ ALEXA VOICE SMART WATCH

ID206mini

Control the smart home to obtain weatherforecast, turn on local alarm clock timer stopwatch function



Oxygen monitoring

14 movement modes

10 day battery life
<2.5 hours charging time



▶ SMART BLUETOOTH CALLING WATCH

ID208BT

Pay attention to your physical health

Comprehensive monitoring of health data

Enjoy sports moments with music on the go



Alexa rouse

free-flowing telephone conversation

1.69 inch Bigger screen, more eye-catching

SHENZHEN AIDU TECHNOLOGY CO., LTD

+86 0755-8252 9675 / +86 186 0305 8799(Mr.Zeng)

11th Floor, Building 3, Guole High tech Industrial Park, Intersection of Dalanghuaning Road and Lirong Road, Longhua New District, Shenzhen



DEEP WATERPROOFING SMARTWATCH



Waterproof watches are divided into regular waterproof and professional waterproof And professional waterproof watches can withstand immersion in different depths of water

FITBIT SENSE SMART WATCH

Waterproof watches are divided into regular waterproof and professional waterproof And professional waterproof watches can withstand immersion



01 SMART WATCH 3PRO

1.36 inch high-definition screen Alipay function AI voice assistant independent time alarm clock NEC access key multiple sports modes



02 SMART WATCH GT3

Intelligent low-power waterproof and dust-proof GPS track positioning AI voice assistant supports calls from Alipay easily



03 SMART WATCH Q3 MAX

Three watch straps, six options for Bluetooth call information synchronization, rotating crown, flexible and practical new low-power chip



04 SMART WATCH Q5 MXA

High definition 390 * 390 bright large screen, providing a new experience on the wrist with alloy body glass bezel, sturdy and wear-resistant



05 SMART WATCH ST6

Bluetooth voice call, local music playback, Bluetooth earphones, local recording, call dial, Siri dialing



06 SMART WATCH I69

Supporting NFC access control unlocking, simply lift the watch on your wrist and approach the NFC door lock to quickly open the door



07 SMART WATCH I39

Simply rotate the rotating crown lightly to scale the applications on the chessboard desktop. quickly and directly reaching the target function



08 SMART WATCH C21

Ip68 deep waterproof, suitable for more environments, strong body, anti drop, anti impact high-definition Bluetooth communication



09 SMART WATCH MX11

Local music playback, call heart rate, custom dial, MP3, men's and women's smartwatch with powerful ring function to meet your needs

SHENZHEN CHENGYING ELECTRONIC TECHNOLOGY CO., LTD

MOB: +86 189 2678 6396(Miss Duan)

ADD: Building 401, Building B, No.131 Bulan Road, Shanglilang CommunityNanwan Street,Longgang District,Shenzhen

SMART WATCH

HIGH DEFINITION

WEARING A WATCH
IS PUTTING ON HEALTH



- BODY TEMPERATURE DETECTION
- MASSIVE PERSONALIZED DIAL
- MULTIPLE SPORTS MODES
- EXTRA LONG RANGE



HIGH KT60



HIGH KT80



HIGH KT90

DEEP WATERPROOFING

Elemental Shanxiong series mountaineering wristwatches have the functions required for outdoor exploration. The altimeter for height measurement, the barometer for convenient prediction of apocalyptic changes and the compass for navigation are only for the survival of urban and outdoor exploration.



- DEEP WATERPROOFING
Sealing and waterproofing technology



- BLUETOOTH CALL DIRECT
Easily deal with handwashing splashes



- CONVENIENT LIFE
Communicate anytimeanywhere often



SHENZHEN LUOHU DISTRICT FUYONG XINGFENG ELECTRONICS FACTORY

Tel: +86 139 2379 2848(Miss Zhang)

Add: 5B, Building 8, Dongxiao Garden, Dongxiao Road, Luohu District, Shenzhen

SMART WATCH

HIGH DEFINITION

Elemental Shanxiong series mountain-eering wristwatches have the functions required for outdoor exploration. The altimeter for height measurement, the barometer for convenient prediction of apocalyptic changes and the compass for navigation are only for the survival of urban and outdoor exploration.



barometer



compass

weather
forecastHeight
measurementINTELLIGENT SPORTS
BRACELET

Heart rate measurement, longlasting endurance, massive online dials in multiple languages

MONITORING HEALTH

Heart rate and blood pressure measurement, sleep monitoring, intelligent power management module ultra long standby

SMART
BRACELET

Fashionable intelligent sports bracelet, monitoring exercise meter steps, heart rate, sleep, lightweight design, customized dial



SHENZHEN YUANZE INTELLIGENT CO., LTD

TELEPHONE: +86 158 1739 4510 (Miss gao)

ADDRESS: 4th Floor, Building D2, Longfei, Longcheng Industrial Park, Longcheng Street Longgang District, Shenzhen

BLUETOOTH INTELLIGENCE

SMART WATCH



BLUETOOTH CALL DIRECT

Elemental Shanxiong series mountaineering wristwatches have the functions required for outdoor exploration.

SMARTWATCH

WEARING A WATCH IS PUTTING ON HEALTH HIGH DEFINITION

BLOOD PRESSURE MONITORING

You can easily measure blood pressure and oxygen levels between your wrists, keeping track of your physical health at all times.



APP PUSH REMINDER

MULTIPLE SPORT MODES

Built-in multiple sports modes, allowing for direct movement while wearing a watch

Watch can record all your exercise data

Magnetic contact charging is convenient and fast, and can be fully charged in 80 minutes



SHENZHEN JINSIDA INDUSTRIAL CO., LTD

Phone: +86-755-82789569 Mobile: +86 136 5031 9561

Add: 2nd Floor, Building 2, Hongzhu Yongai Industrial Park, Huazhujiao, Xixiang Street, Bao'an District, Shenzhen

amazfit

ABOUT US

At Amazfit, see the colorful future of smart wearables.

We integrate fashion and innovation into technological intelligence, and make electronic devices the carrier of personal style, linking all aspects of future life.

From Amazfit's first product, market-leading sensor research and development, to the world's first curved display, every series of Amazfit's rich product line that is constantly changing is our experience in intelligent hardware technology, product design and interaction scenarios. Adhere to the research and development milestones of forward-looking innovation.

As the user's companion, we lead a healthy and active lifestyle – helping users to light up their inner drive, so that everyone can live a life of love and splendor.



400-000-6666

<https://cn.amazfit.com/>

smart wear



Unbounded aesthetics,
firm and soft

Amazfit GTR 3 Pro

Amazfit GTR 3

Born upward,
make life more colorful.



BLOOD
PRESSURE
DETECTION



NFC
ACCESS
CONTROL



INDEPENDENT
MUSIC
PLAYBACK



50 METERS
PROFESSIONAL
WATERPROOF

WIRELESS & HIFI

MOONDROP ULTRASONIC Review

Today, Meldrick reviews the MOONDROP ULTRASONIC, a hybrid dynamic and BA driver TWS equipped with BT5.3, LDAC decoding, and ANC. It is priced at \$74.99.

Disclaimer: This sample was sent to me in exchange for my honest opinion. Headfonics is an independent website with no affiliate links or status. I thank MOONDROP and Shenzhen Audio for their support.



● MOONDROP ULTRASONIC REVIEW

As a sub-\$100 pair of TWS IEMs, the MOONDROP ULTRASONIC is a jack of all trades and master of none. with its ANC and Bluetooth 5.3 connectivity, However, with decent sonic capabilities, the ULTRASONIC is worth considering for buyers looking for an affordable pair of ANC-capable TWS earbuds.

PROS

- Good Tuning options.
- Convenient companion app.
- Decent ANC performance.

CONS

- Difficult in-ear seal with its oval nozzle and tips.
- Touch controls are easily mistriggered.
- Lack of a pairing button.

By now most audiophiles know MOONDROP for their iconic wired IEMs such as the Blessing 3 and Variations, however, they've also been a consistent competitor in the True Wireless IEMs space, with releases such as the Alice and Golden Ages.

Their newest entry, the ULTRASONIC, stands out from the rest by being the first MOONDROP hybrid dynamic driver and BA pair of wireless earbuds (TWS).

Slotting in the middle of MOONDROP's TWS lineup at \$74.99, it is only \$5 cheaper than the planar magnetic Golden Ages. Its unique driver may make it an interesting prospect not only within MOONDROP's TWS lineup but in the sub-\$100 TWS market as a whole.

Read through my review below to see how the ULTRASONIC Performs and compares against other TWS IEMs in the market.

● Earbuds

Just like its cradle, the ULTRASONIC's earbuds share design with another pair of TWS IEMs in MOONDROP's line-up. This time, it shares the Golden Ages earbud design. The shape and layout of their earbuds are completely identical, in fact, I was able to place the ULTRASONIC earbuds in the Golden Ages and vice-versa.

The earbud stems have a rectangular shape that makes them easy to pull in and out of the ear and do not cause any comfort issues.

However, the earbuds are constructed out of the same soft, matte-finish plastic as the cradle's base.

The earbuds did a good job of hiding oils, fingerprints and dead skin. Even after weeks of use, the earbuds themselves still look new, which is something I can't say about the other TWS IEMs I've tested.

The stems have a stylized MOONDROP logo surrounded by an abstract array of lines, with a red dot at the top of the front surface. The top of the earbuds continues the same grey and red motif, with the top of the right earbud being colored red, and the left being colored grey.

The earbuds have a subdued aesthetic, especially compared to the Golden Ages they borrowed from, making the ULTRASONIC an easier fit in most people's everyday carries.

● Controls

The MOONDROP ULTRASONIC's control scheme is quite similar to most TWS sets in the market, and practically identical to MOONDROP's other offerings.

A single tap on either side serves as play/pause, a double tap on the left side skips to the previous track, and a double tap on the right-side skips to the next track.

Triple taps activate the voice assistant and pressing and holding for 3 seconds cycles between ANC, Transparency mode, and Standard mode where neither ANC nor Transparency mode are turned on.

The ULTRASONIC still comes with MOONDROP's clever active mode indicator system. When switching to ANC mode, a soft anime-style female voice gently whispers "Shhh," signaling that noise cancellation is enabled.

Switching to standard mode triggers an "Ummm..." sound, while a playful "Hey!" marks the transition to Transparency mode.

The default control scheme of the ULTRASONIC felt intuitive and easy to use. However, for those who prefer a different setup, the MOONDROP Link App offers a straightforward way to customize the controls to suit individual preferences.

● Packaging & Accessories

The unboxing experience of the ULTRASONIC is still quite good, with the box's top cover having an exposed plastic window to show off the ULTRASONIC's cradle and earbuds. However, it pales in comparison to MOONDROP's other products such as the Blessing 3 and Golden Ages.

Opening up the box shows a black plastic tray holding the earbuds, carriage, TPU case, charging cable, and 3 additional pairs of ear tips excluding the ones mounted on the earbuds.

● Comfort & Isolation

Since the ULTRASONIC shares the Golden Age's earbud design, it unfortunately also shares its finicky comfort and isolation performance.

The ULTRASONIC's plastic earbuds are still decently comfortable once a seal is formed, however since the nozzle and ear tip are both oval-shaped, each earpiece must be rotated to a specific orientation to form an effective seal.

In comparison, TWS or IEMs with circular nozzles are much simpler to seal, as their round nozzles and tips maintain consistent dimensions regardless of orientation.

During my testing of the ULTRASONIC, I frequently had to readjust the earbuds after inserting them to find the correct positioning.

The need for constant readjustment was particularly frustrating due to the earbuds' touch controls. When trying to reposition them, I instinctively grabbed the stems, inadvertently triggering Pausing my music or skipping to the next track.

That said, once a proper seal is established, the ULTRASONIC delivers impressive passive isolation.

Even in standard mode with ANC off, it effectively blocks out road noise and quieter conversations. With ANC activated, it completely blocks out background noise and surrounding conversations.



Note: The above pictures and texts are transferred from headfonics.com. If there is any infringement, please contact InRaiser.

IEM & EARPHONES

Kiwi Ears KE4 Review

In this feature, Meldrick reviews the Kiwi Ears KE4, a hybrid universal IEM featuring two BA and a dual dynamic isobaric driver configuration. It is priced at \$199.

Disclaimer: This sample was sent in exchange for my honest opinion. Headfonics is an independent website with no affiliate links or services. I thank Linsoul and Kiwi Ears for their support.



● KIWI EARS KE4 REVIEW

The \$199 Kiwi Ears KE4 is a pair of hybrid IEMs that are nicely balanced with a pleasing and relaxing tuning, and a decent to good resolution performance at its price point.

PROS

- Very Good Mid-bass.
- Good Mids resolution.
- Treble is detailed but not fatiguing.

CONS

- Lacks some high-end resolution.
- Barebones packaging.

Kiwi Ears has had an impressive first few years with IEMs such as the Quartet, Quintet, and the Orchestra. Today, Kiwi is trying to sustain its upward momentum with the new KE4 IEM.

Costing \$199, the KE4's hybrid dual dynamic and 2 BA driver configuration aims to deliver a compelling balance between technical performance and a pleasing tuning profile, partially motivated by the "new meta" tuning style making the rounds within the ChiFi community.

To see if the KE4 creates a unique sound in the sub-\$200 bracket head-on, read my thoughts and comparisons below.

● Features

The KE4 features a four-driver hybrid system, combining 2 dynamic drivers in an isobaric configuration for the bass, and 2 balanced armatures to handle mids and treble frequencies. This setup aims to provide a dynamic yet precise sound signature across the frequency range.

Kiwi Ears selected a pair of American-made Knowles RAD 33518 BA drivers for the KE4, aiming to deliver a lush midrange presentation and organic-sounding treble to complement the rest of the frequency response.

The 4 drivers are meshed with their precision 3-way passive crossover wherein each driver has an independent sound tube. These drivers were configured to match Kiwi Ear's new target; the result of years of research to deliver a thumping sub-bass and a warm-sounding mid-range.



● Bass

The KE4 has an organic-sounding tuning that leans towards the warm side, emphasizing impactful sub-bass and a smooth yet lush-sounding mid-bass.

The sub-bass presence is audible with good authority and impact. It does not deliver an overwhelming sense of bass, instead, it opts for a more controlled response that only delivers just enough sub-bass quantity needed for the track.

Acoustic kick drums and 808s are presented with good texture on the KE4. On good recordings and mixes, the minute differences between the different drum hits add a richer dimension to the track making them sound more engaging.

The KE4 also excels in delivering a warm mid-bass presentation. In disco-funk tracks, rhythmic bass lines have a rich comforting quality that compels the listener to take a more relaxed approach when listening to their music.

The resolution within the mid-bass region is not the best I've heard. More neutral-sounding IEMs such as the Blessing 3 certainly have better detail within this region.

However, the KE4's tuning and emphasis on a warm presentation make this my go-to set for R&B, Funk, and disco tracks.

● Mids

Despite the thick and warm sub-bass, the KE4 manages to deliver a clean and organic-sounding mid-range that does not get muddled up by the weightiness of the bass region.

String instruments are presented with good dynamics and harmonics. They do not have the same note weight as instruments within the bass region, however, they have good enough resolution performance to prevent me from looking for more.

Male vocals are presented with good authority and warmth. Vocal-centric jazz and blues tracks have a mesmerizing sense of warmth, with sting and vocal tones sounding like they surround the listener.

Female vocals are similarly detailed and resolving, however, they are not able to match the weight of male vocals.

Do not be mistaken, this is still a very good pair of IEMs for female-centric vocal tracks. They can present delicate vocals without sacrificing too much in terms of tuning.

However, I found that these shined best when listening to deep female vocalists such as Adele, where the power of the singer is felt through every portion of the mix.



● Imaging

The imaging of the KE4 is average, capable of isolating and positioning instruments at a decent level, though it does not particularly excel in this area.

Its soundstage performance is also middling; it is not expansive enough to fully immerse you in a vast wall of sound, yet it avoids being overly intimate to the point of compromising the sense of atmosphere.

Note: The above pictures and texts are transferred from headfonics.com. If there is any infringement, please contact InRaiser.

IEM & EARPHONES

THIEAUDIO Origin Review

Nihal reviews the THIEAUDIO Origin, a new high-end 10mm dynamic, BA, EST, and bone conduction driver universal IEM in today's feature. It is priced at \$849.

Disclaimer: This is a sample in exchange for my honest opinion. Headfonics is an independent website with no affiliate links or status. I thank Linsoul and THIEAUDIO for this opportunity.



● Bass

The bass on Origin is quite special and is something that grabs your attention as soon as you put the IEM in your ears. The bass is full-bodied and with a big-bold impact. The bass has a slight warmth in it and does not feel dry. It has a nice speed with a satisfying decay.

There is a decent balance of mid-bass and sub-bass while not putting a focus on one over the other. The sub-bass region offers nice rumbles and adequate depth. There's just pleasing tightness in the mid-bass as well, with excellent impact.

I have seen a few people complaining about losing bass on some earlier THIEAUDIO IEMs, which felt thick and not so tight. That's not the case with the Origin. The bass stays sharp and defined even at higher volumes or in rather complex audio tracks. Origin's bass should easily please the bassheads.

The other features, such as texture and layering, are well taken care of by Origin. On a bass-heavy track, you can hear the bass produced by different sources.

One other noticeable thing is that this bass does not bleed into the higher frequencies. While in some IEMs, excess bass would sometimes mask the nuances, the Origin's bass sounds crisp and controlled.

● Stock Cable

Thankfully, the Origin comes with a different cable than I had seen on the last few THIEAUDIO IEMs. This cable has an entirely different build and design.

It features high-grade components, including silver-plated 5N linear crystal oxygen-free copper (LCOFC) wire and silver-plated 4N LCOFC wire—a total of 161 wires in a 20AWG configuration.

Additionally, the cable incorporates spiral shielding and Litz Type 2 technology for enhanced durability and reduced signal loss.

The outer layer of dark grey-colored PVC gives the cable a pleasing premium touch. However, this adds a bit of stiffness. It strikes me as a softer and thinner version of Effect Audio Code cables. The adapter, Y-split, and slider have a mix of blue and black colors, giving the cable a very refreshing look.

The cable features THIEAUDIO's modular connector system, which allows users to swap the cable plug between 3.5mm unbalanced, 4.4mm balanced, and 2.5mm balanced connectors. The cable performs decently, so I never felt the need to swap it out for something else.



● Staging & Dynamics

The Origin's technical capability is more than impressive. The soundstage it offers is massive, very wide, and has excellent depth.

The holographic stage presentation on the Origin is special, enhancing the sense of space and separation. This also helps the instruments spread far and wide across the stage.

One does not encounter such a presentation very often. It is mostly attributed to the inclusion of the BCD, which adds a layer of expansiveness to the soundstage.

The imaging capability is solid, with instrument positioning being quite precise. The layering and instrument separation benefit as well, as I did not sense any congestion even with complex tracks.

The resolution on the Origin is handled quite well, bringing out the fine details and nuances very accurately.

Note: The above pictures and texts are transferred from theverge.com. If there is any infringement, please contact InRaiser.

ST DONGGUAN SOUND ELECTRONIC MATERIALS CO.,LTD.

(DONGGUAN SHENGHUI TAIXIANG SILICONE PRODUCTS CO., LTD.)

东莞市声态电子材料有限公司 (东莞市生辉泰橡胶制品有限公司)



耳挂、硅胶 (EAR HANGING、SILICA GEL)



插头、插针 (PLUG, PIN)



DONGGUAN SOUND ELECTRONIC MATERIALS CO.,LTD.

(DONGGUAN SHENGHUI TAIXIANG SILICONE PRODUCTS CO., LTD.)

CONTACT: Mr. Liu LINE: +86 159 9987 1272 ADDRESS: NO.17 SAN YUAN ROAD, CHONGMEI INDUSTRIAL ZONE, BO TOW, CHASHAN TOWN, DONGGUAN CITY, CHINA
TEL: 0769-82210850 FAX: 0769-82210860



STORE APP
ENLINK SHOW



Mr. Liu
WECHAT

EZON INTELLIGENT SPORTS

Smart sports watch, focusing on sports technology brands



ABOUT US

FOUNDED IN 2008

EZON (Chinese name: Yizhun), founded in 2008, with its R&D headquarters in China, was founded by Mr. Chen Zuyuan. As a professional sports technology brand, EZON integrates sports and technology, always adheres to the user experience as the core, and is committed to providing users with more scientific and professional wearable smart products. It is a national sports industry demonstration project.



RUNNER 6



TRAINING 935



RUNNER 3



HEART RATE ARMBAND



HEART RATE BELT C009



CLIMBING TABLE H001

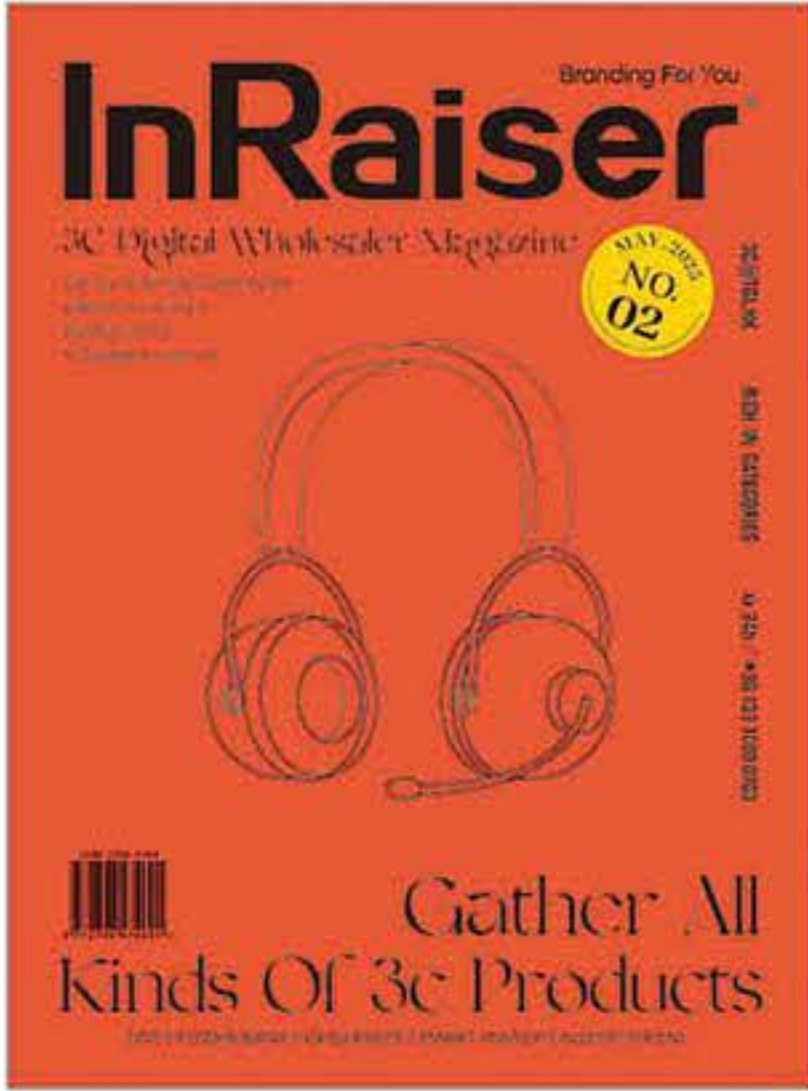


400-111-6865

Tel: (+86)755-83526228 Fax: (+86)755-83526278
Address: 23A, Haiying Building, Rainbow Xindu, Caitian Road, Futian District, Shenzhen



CONTENTS
THE SECOND ISSUE IN 2025
(JUNE TO JULY)



3C DIGITAL INDUSTRY
WHOLESALE MAGAZINE

HOT-LINE 400-6838-033

TEL (SHAN TOU) +86 0754-8991-8880

WEB www.ejrr.com

ISSUER
GuangDong Tanggula Culture Creative Co., LTD

ISSUING ADDRESS
12C, Changrong Building, Jinsha East Road,
Shantou, Guangdong

PUBLISHER
Hong Kong Tanggula Culture Creative Co., LTD

PUBLICATION ADDRESS
4B, Kingway Commercial Building,
171-173 Lockhart Road, Wan Chai Road, Hong Kong

SOLEMN STATEMENT:
The pictures and text in this publication have not been approved in
writing by the relevant copyright owners. It shall not be reproduced
and used in any form or method, if there is any infringement.
The issue is not responsible for this publication, hereby declare.

GOLDEN PAGE
BACK COVER

Chuangmao Electronics Digital Co., Ltd.
(创贸)

INSIDE FRONT COVER

- Ohayo
(雷登)
- 01 Libratone Sound
(小鸟创新)
 - 02 Dongguan Geku Acoustics Co., Ltd.
(歌酷)
 - 04 Niae Smart Watch Technology Co., Ltd.
(Niae)
 - 05 Guangzhou Rock Art Design Co., Ltd.
(岩石)
 - 06 Qihang Electronics Technology Co., Ltd.
(启航)
 - 08 Shenzhen Wangyi Intelligent Co., Ltd.
(旺亿)
 - 09 TMOXX
(天魔星)
 - 10 Sanag sound
(赛那)
 - 12 Shenzhen Fumnuo Technology Co., Ltd.
(富姆诺)
 - 14 Dongguan Chuanglian Technology Co., Ltd.
(创联)
 - 16 Dongguan Lefang Industrial Co., Ltd.
(乐放)
 - 18 Chenruijia Electronics Technology Co., Ltd.
(晨锐嘉)
 - 150 Sound Electronics Materials Co., Ltd.
(声态)
 - 151 Ezon Smart Wear
(宜准)



HEADPHONE
SERIES
P20

- Shenzhen Utrue Technology Co., Ltd.
(优图尔)
- 22 Dongguan Gaobaozhen Electronics Co., Ltd.
(高保真)
 - 24 Yingtong Telecommunication Co., Ltd.
(赢通)
 - 26 Shantou Fengxing Electronics Factory
(丰兴)
 - 28 Yueyin Electronics Technology Co., Ltd.
(悦音)
 - 30 Xiaojie electronics technology Co., Ltd.
(小杰)
 - 32 Xiaoyun Electronics Technology Co., Ltd.
(小芸)
 - 34 Luxun Electronics Technology Co., Ltd.
(路讯)
 - 36 Tesheng Electronic Technology Co., Ltd.
(特晟)
 - 38 Gude Electronic Technology Co., Ltd.
(骨德)
 - 40 Gen.M Intelligent Technology Co., Ltd.
(锦麦)
 - 42 Jiangxi Quyuesheng Electronics Co., Ltd.
(趣悦声)

- 44 Huizhou Eight Cubic Technology Co., Ltd.
(八立方)
- 46 Dongguan Langge Electronics Co., Ltd.
(狼歌)
- 48 Dongguan Weier Silicone Rubber Products Co., Ltd.
(伟尔)
- 50 Huizhou Chenyue Electronic Co., Ltd.
(诚悦)
- 52 Baohuitong Hardware Plastic Mould Electronics Co., Ltd.
(宝惠通)
- 54 Huizhou Jiezhisheng Electronic Technology Co., Ltd.
(杰之升)
- 56 Dongguan Xiangzi Electronics Factory
(湘资)
- 58 Dongguan Sweet Pie Acoustic Technology Co., Ltd.
(悦耳派)
- 60 Dongguan Hififreemax Intelligent Technology Co., Ltd.
(海非麦克斯)
- 62 Guangzhou Nifeng Electronics Co., Ltd.
(逆风)
- 64 Foshan Shengzhahui Electronic Technology Co., Ltd.
(生之辉)
- 66 Shenzhen Yinye Electronics Co., Ltd.
(音业)
- 67 Shenzhen Meiyigou Technology Co., Ltd.
(美易购)
- 68 Shantou Kinghot Electronics Co., Ltd.
(锦鸿泰)
- 69 Dongguan Maikemagnetic Industry Co., Ltd.
(迈科)
- 70 Dongguan Haoming Electronics Co., Ltd.
(浩鸣)
- 71 Huizhou Maiceles Electronic Technology Co., Ltd.
(迈塞尔)
- 72 Zhichuangda Electronics Factory
(智创达)



AUDIO SERIES
P76

- ENKOR SOUND
(恩科)
- 78 Dongguan Shishishun Technology Co., Ltd.
(视视顺)
 - 80 Foshan Yinbeier Electronics Factory
(音倍尔)
 - 82 Lanlian Digital Technology Co., Ltd.
(兰联)
 - 84 Shenzhen Chaojin Electronics Co., Ltd.
(超进)
 - 86 Shenzhen Kaijason Electronics Co., Ltd.
(凯杰森)
 - 88 Fanatics Digital Technology Co., Ltd.
(狂热者)
 - 90 Leshang Creative Technology Co., Ltd.
(乐尚)
 - 92 Shenzhen Shangyitu Technology Co., Ltd.
(尚意图)
 - 94 Weitebao Technology Development Co., Ltd.
(威特宝)
 - 96 Shenzhen Siyi Media Co., Ltd.
(源来音)
 - 98 Shenzhen Ziyun Technology Co., Ltd.
(紫韵)
 - 100 Shenzhen Zhongshilan Industrial Co., Ltd.
(中世兰)
 - 102 Shenzhen Yale Electronics Co., Ltd.
(雅乐)
 - 104 Shenzhen Leyinheng Technology Co., Ltd.
(乐音恒)
 - 106 Le'ang Electronics Technology Co., Ltd.
(乐昂)
 - 107 Shenzhen Kaiwu Life Co., Ltd.
(开物)



INTELLIGENT
WEARABLE
P110

- Shenzhen Jutao Technology Co., Ltd.
(聚韬)
- 112 Guangzhou Moko Watch Industry Co., Ltd.
(莫科)
 - 114 Jiaming Information Technology Co., Ltd.
(嘉明)
 - 116 Lianghao Plastic Electronics Co., Ltd.
(亮好)
 - 118 Shenzhen Nuoma Electronics Co., Ltd.
(诺玛)
 - 120 Leleja Technology Shenzhen Co., Ltd.
(乐乐家)
 - 122 Hongshengda Electronics Co., Ltd.
(泓盛达)
 - 124 Shenzhen Shangsheng Industrial Co., Ltd.
(尚晟)
 - 126 Guolixing Innovation Technology Co., Ltd.
(国立兴)
 - 128 Shenzhen Oupinda Technology Co., Ltd.
(欧品达)
 - 130 Shenzhen Chenghua Technology Co., Ltd.
(呈华)
 - 132 Shenzhen Aidu Technology Co., Ltd.
(爱都)
 - 134 Chengying Electronics Technology Co., Ltd.
(成赢)
 - 136 Shenzhen Xingfeng Electronics Factory
(兴锋)
 - 138 Shenzhen Yuanze Intelligent Co., Ltd.
(元泽)
 - 140 Shenzhen Jinsida Industrial Co., Ltd.
(金斯达)
 - 142 Amazfit Smart Wear
(华米)



INDUSTRY
INFORMATION
THE LATEST INFORMATION OF
INDUSTRY

- 73 Abyss Diana Dz Review
(Abyss Diana Dz 评论)
- 74 Noble Audio Fokus Apollo Review
(Noble Audio Fokus Apollo 评论)
- 108 Creative Aurvana Ace 2 Review
(Creative Aurvana Ace 2 评论)
- 144 MOONDROP ULTRASONIC Review
(MOONDROP ULTRASONIC 评论)
- 146 Kiwi Ears KE4 Review
(Kiwi Ears KE4 评论)
- 148 Thieaudio Origin Review
(Thieaudio Origin 评论)

